

UNIQUE ROLE of WOMEN in DEALING WITH CLIMATE CHANGE



Traditionally, women are generally involved in the management, maintenance, and conservation of natural resources.

And they often have detailed knowledge of their local environment.

In the Mekong region, Climate change will affect local women severely as their lives depend very much on natural environment.



The exclusion of women from climate change decision-making processes silences the voices of half of the world's population.

It deprives society of many skills, experiences, and capacities unique to women.



'mekong' the MOTHER

The English name of the River 'Mekong' is, in fact, a misunderstanding. In Thai and Lao, the term used for river is Mae Nam, literally means 'mother water'.

The locals refer to it shortly as Mekong - "Mother Khong". To them, a river is a mother who provides life and nourishment.

People would, in return, take care of the river and use its resources with respect.

"The river and my blood are the same," says a fisherman in Chiangkhong, Thailand.



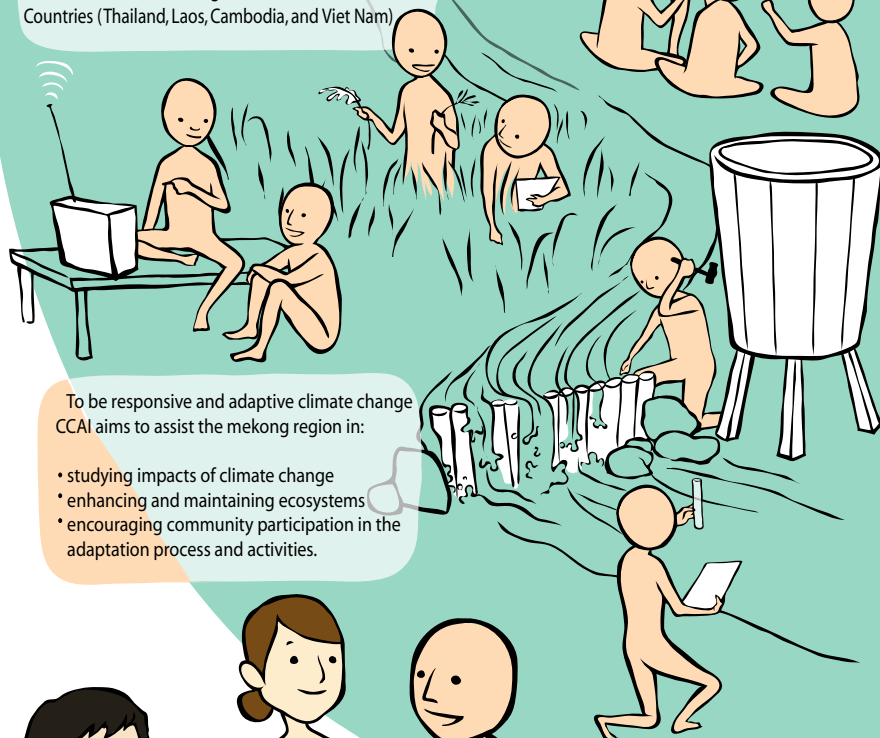
Mekong River Commission Climate Change & Adaptation Initiative



Global Phenomenon
Regional Collaboration
Local Action

As global concerns about climate change grow, the MRC aims to discover what it will mean to the people of the Mekong in terms of social and environmental impacts.

The MRC Climate Change and Adaptation Initiative (CCAI) is a collaborative regional effort of MRC Member Countries (Thailand, Laos, Cambodia, and Viet Nam)



To be responsive and adaptive climate change CCAI aims to assist the mekong region in:

- studying impacts of climate change
- enhancing and maintaining ecosystems
- encouraging community participation in the adaptation process and activities.

CCAI also determines to mainstream gender perspectives in all its efforts in order to benefits from the knowledge and specialized skills of women.

This is to ensure that the work benefits men and women equally, in accordance with their different needs, and with equal participation at all levels.