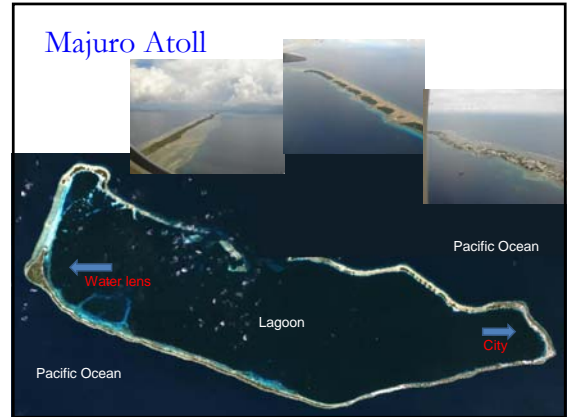


Republic of the Marshall Islands
Pacific Integrated Water Resources Management
National Planning Programme 2010-2011

**Protecting Laura Lens:
"The Heart of Majuro"**



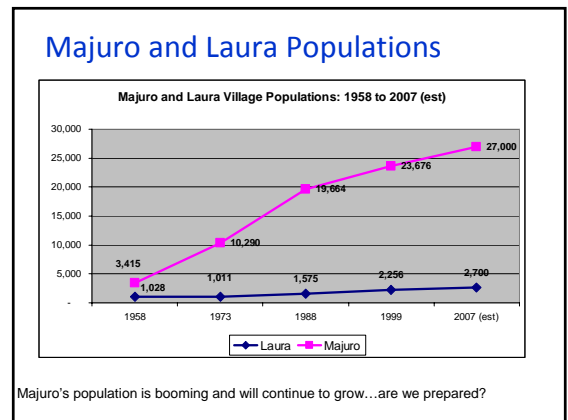
Demographic trends

Laura Population and Household Indicators: 1958 to 2009

Population and Households	1958	1973	1988	1999	2009
Population	1,028	1,011	1,586	2,256	2,367
Households (occupied)			186	305	319
Average persons per household			8.5	7.4	7.9

Sources: censuses and 2009 Water Survey.

Laura Landscape: mid 1980s versus early 2000s



RMI Laura Lens Demonstration Project

Project Purpose

- Integrated Water Management and Development Plan for Laura Lens, Majuro

Identification of Key Threats and Management Issues...progress

- Remote sensing (2006 Quickbird satellite image)
- Field work – GPS surveys
- Existing studies (i.e. USGS, Japanese studies)

Vulnerability Mapping - Identifying threats to Laura Lens

Remote sensing (2006 Quickbird satellite image)

- Field work – GPS surveys
- Existing studies (i.e. USGS, Japanese studies)

Erosion

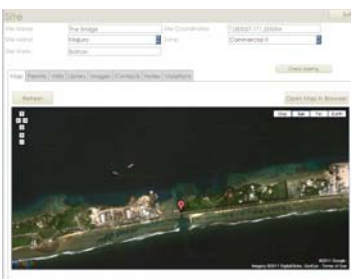
- Historic aerial photos – Ford, 2011 (in press) showed areas of erosion and areas of accretion. Relatively stable over the last 30-40 years
- Monitoring network – shore perpendicular profiles surveyed to see high frequency changes in beach position (quarterly surveys-joint SLM activity)

The lens extends under the seabed in the lagoon, as such erosion along the lagoon coast is a significant threat



- 60cm Quickbird Satellite image
- Edge of vegetation
- Toe of beach
- Land
- Vegetated land
- Buildings (population density proxy?)
- Road
- Farms
- Lens
- Wells

clicking on a particular site will display all data held about that site.



data collected includes:

- maps
- permits
- visit diary
- document library
- image repository
- site contacts
- site notes
- record of site violations

Steps towards institutionalizing IWRM

Steps and deliverables	May-11	Jun-11	Jul-11	Aug-11	Sep-11	Oct-11	Nov-11	Dec-11	Jan-12	Feb-12	Mar-12	Apr-12	May-12	Jun-12	Jul-12	Aug-12
Design and establish NWAB				X												
Design and establish Coordination Office				X												
Develop and adopt National Water/Sanitation Policy				X												
Develop and adopt Action Plan									X							
Develop and pass new IWRM Law																X

X = activity completed/delivered

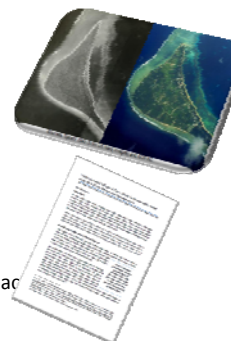
Background Policy and Planning Analysis (draft)

- Inventory existing policies, laws, etc.
- Inventory ongoing and planned projects
- Determine and benchmark public expenditure
- Assess need for improved cross-sector coordination
- Compile stakeholder recommendations for reform
- Facilitate intergovernmental coordination

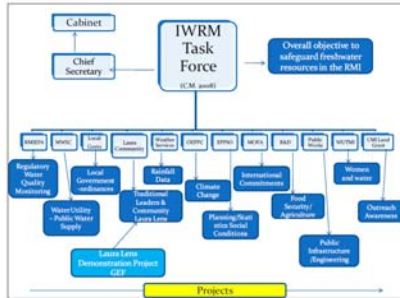


Laura case study (draft)

1. Background
2. Laura prehistory/history
3. Demographic trends
4. Institutions, governance, leadership in Laura
5. Water lens: a common-pool resource
6. Essential ingredients for collective action and impact
7. Conclusion



Revitalization of the National Taskforce



National Summit Report

Recommendations for strengthening IWRM in the Laura community, including how to better integrate traditional governance

Recommendations on securing sustainable financing for IWRM (internal and external)



What we *hope* to see in 3 years

1. Functional National IWRM Task Force with strong links to Laura Water Lens Committee and Advisory Group strengthened with clear role and authority
2. Implementation of targeted stress reduction measures at Laura (feeding back into national level)
3. An Integrated Water and Land Resources Management Plan for Laura Lens
4. Implementation of National Water and Sanitation Policy and medium term action plan-sustainable financing
5. Operation of a Laura Water Lens Learning Center
6. Arrangements in place for continuing, replicating and upscaling activities – Phase II

Conclusions

- Water and resource management challenges in Laura similar to those at national level
- Laura a 'microcosm' of greater IWRM challenges
- Principles pursued at national level relevant
- Laura should continue to be a key component of national level policy and planning for IWRM
- But at the same time, Laura is unique...

Conclusions

- If governance can be strengthened in Laura, through IWRM process (and through the ongoing demonstration project)...
- Then there is hope that governance in other communities can also improve...

And if we are able to manage our resources and affairs at the community level, then there is hope that governance can begin to improve across the nation...

Kajjitok/Questions? Kommool tata!