

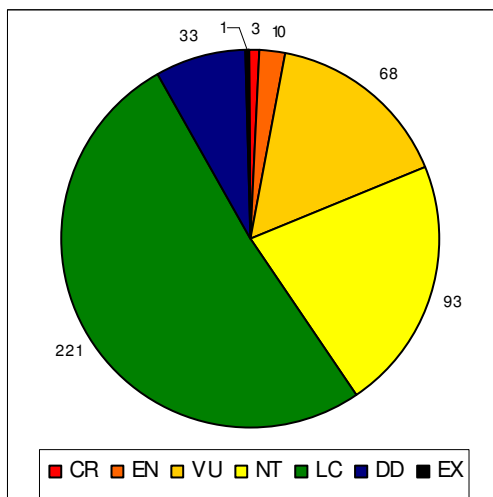
AMERICAN SAMOA

Estimated number of described and assessed species

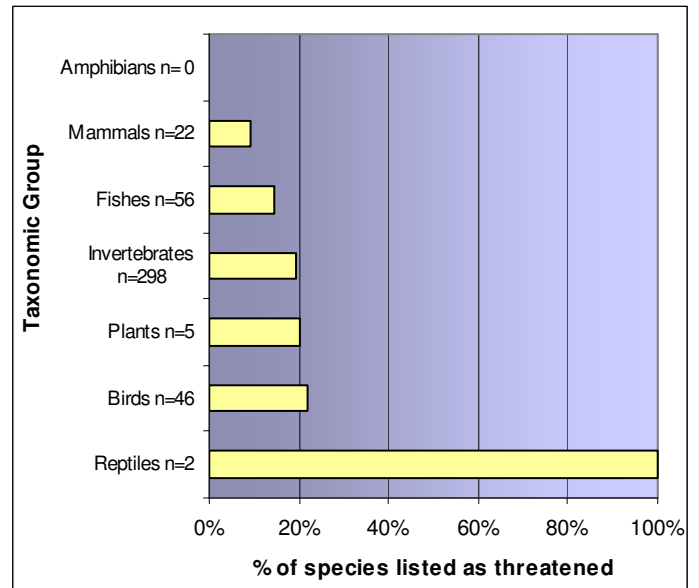
Taxonomic Group	Sub group	Estimated number of species described*	Number of Species Assessed
Plants	Mosses	40	0
	Ferns	1	0
	Cycads	0	0
	Conifers	0	0
	Dicots	27	5
	Monocots	54	0
	Algae	35	0
	Fungi	112	0
	Total Plants		269
Birds		46	46
Mammals		22	22
Reptiles		9	2
Amphibians		0	0
Fish	Marine Fish	727	56
	Fresh-water Fish	21	0
Total Fish		748	56
Invertebrates	Insecta	93	0
	Arachnids	0	0
	Hard Corals	279	279
	Molluscs (Bivalves and Gastropods)	unknown	10
	Crustaceans	unknown	1
	Hydrozoa	unknown	7
	Other invertebrates	unknown	1
Total Invertebrates		372+	298
TOTAL		1466+	429

*For sources, see page 2

Number of assessed species in each Red List category



Percentage of assessed species listed as threatened (CR, EN, VU categories)



Extinctions

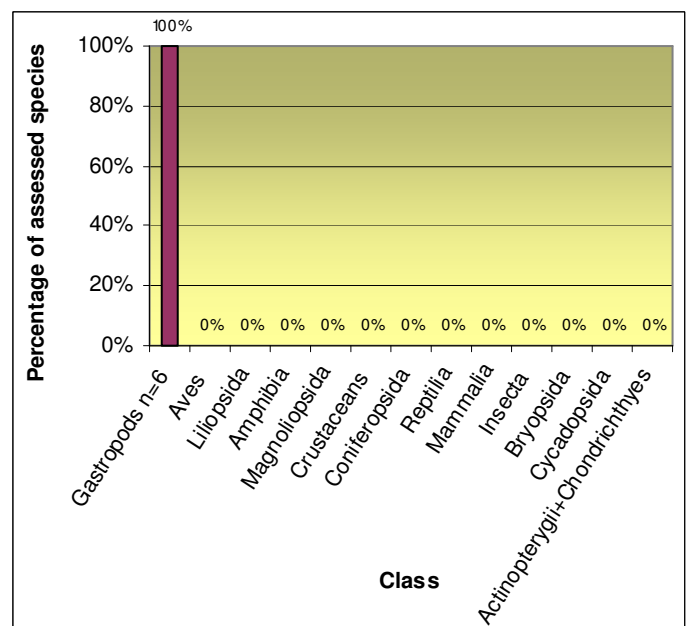
There is one assessed species listed as Extinct for American Samoa - the Gastropod, *Diastole matafaoi*, the Mount Matafaoi Different Snail, which was endemic to American Samoa.

Assessed endemic species (not including EX or EW)

American Samoa has 6 assessed endemic species. For their threat categories see Figure 11.

GASTROPODA	<i>Diastole</i>	<i>matafaoi</i>
GASTROPODA	<i>Eua</i>	<i>zebrina</i>
GASTROPODA	<i>Samoana</i>	<i>abbreviata</i>
GASTROPODA	<i>Samoana</i>	<i>conica</i>
GASTROPODA	<i>Samoana</i>	<i>thurstoni</i>
GASTROPODA	<i>Trochomorpha</i>	<i>apia</i>

The graph below shows the percentage of American Samoa's assessed species that are endemic, by class.



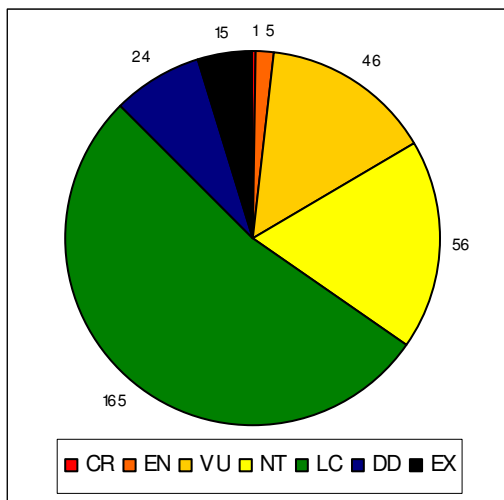
COOK ISLANDS

Estimated number of described and assessed species

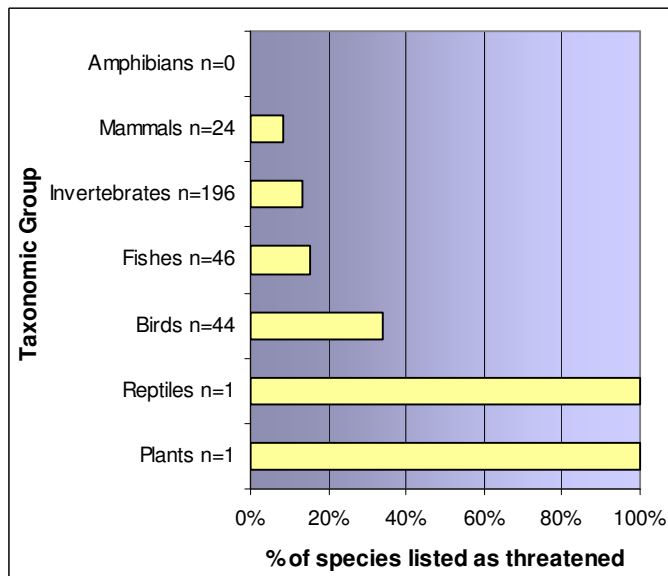
Taxonomic Group	Sub group	Estimated number of species described*	Number of Species Assessed
Plants	Mosses	11	0
	Ferns	14	0
	Cycads	1	0
	Conifers	17	0
	Dicots	269	1
	Monocots	84	0
	Algae	21	0
	Fungi	250	0
Total Plants		667	1
Birds		44	44
Mammals		24	24
Reptiles		8	1
Amphibians		0	0
Fish	Marine Fish	563	46
	Fresh-water Fish	6	0
Total Fish		569	46
Invertebrates	Insecta	61	0
	Arachnids	0	0
	Hard Corals	178	178
	Molluscs (Bivalves and Gastropods)	70	16
	Crustaceans	Unknown	1
	Hydrozoa	Unknown	1
	Other invertebrates	Unknown	0
Total invertebrates		309	196
TOTAL		1621	312

*For sources, see page 2

Number of assessed species in each Red List category



Percentage of assessed species listed as threatened (CR, EN, VU categories)

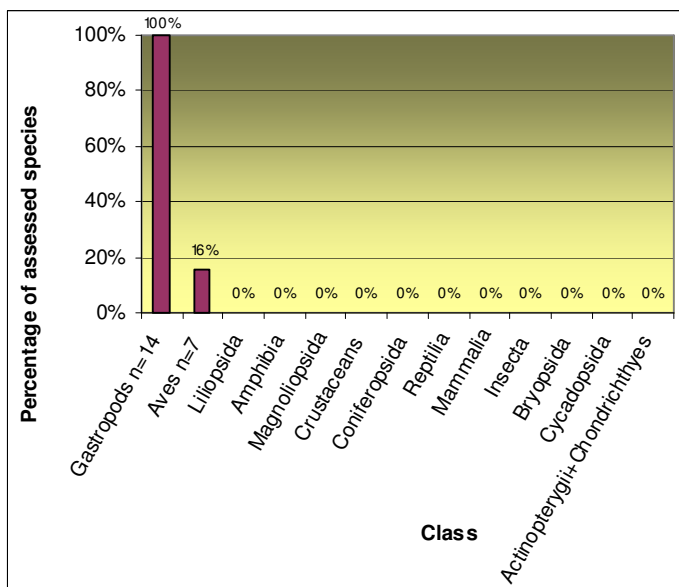


Extinctions

One bird is listed as Extinct on the 2008 red List - *Aplonis mavornata*, the Mysterious Starling. This bird was only known from one specimen collected in 1825 and it is thought that predation by rats led to its extinction (Birdlife International 2008a). There are also 14 records of Extinct Gastropods.

Assessed endemic species (not including EX or EW)

There are 21 endemic species listed for the Cook Islands, all of which are Gastropods or Birds. For their threat status, see Figure 11. The graph below shows the percentage of the Cook Island's assessed species that are endemic, by class.



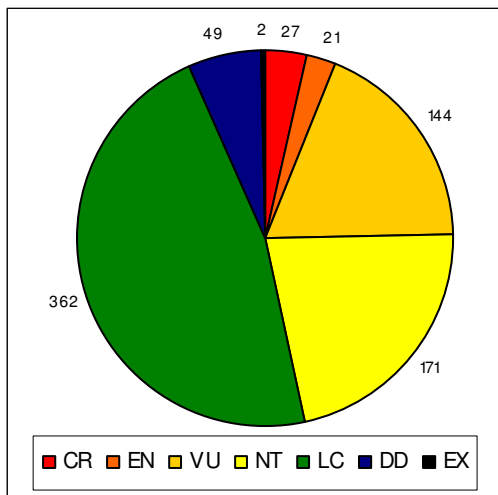
FIJI

Estimated number of described and assessed species

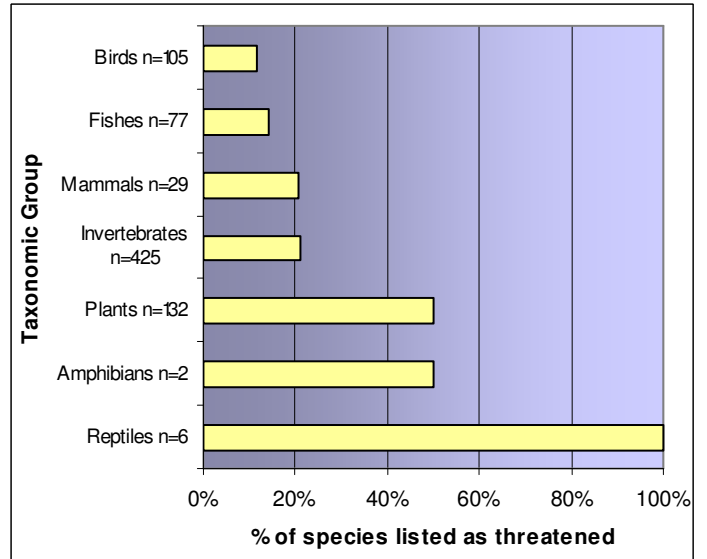
Taxonomic Group	Sub group	Estimated number of species described*	Number of Species Assessed
Plants	Mosses	281	0
	Ferns	234	0
	Cycads	8	2
	Conifers	21	9
	Dicots	1220	101
	Monocots	382	20
	Algae	99	0
	Fungi	415	0
Total Plants		2660	132
Birds		105	105
Mammals		29	29
Reptiles		36	6
Amphibians		2	2
Fish	Marine Fish	883	77
	Fresh-water Fish	53	0
Total Fish		936	77
Invertebrates	Insecta	748	0
	Arachnids	64	0
	Hard Corals	410	410
	Molluscs (Bivalves and Gastropods)	427	6
	Crustaceans	unknown	2
	Hydrozoa	unknown	6
	Other Invertebrates	unknown	1
Total Invertebrates		1649	425
Totals		5417	776

*For sources, see page 2

Number of assessed species in each Red List category



Percentage of assessed species listed as threatened (CR, EN, VU categories)



Extinctions

One assessed bird is recorded as Extinct in Fiji: *Nesoclopeus poecilopterus*. One plant species is listed as Extinct: *Weinmannia spiraeoides*. The Fiji Long-legged Warbler (see below) was thought to be Extinct, but recent sightings have confirmed otherwise.

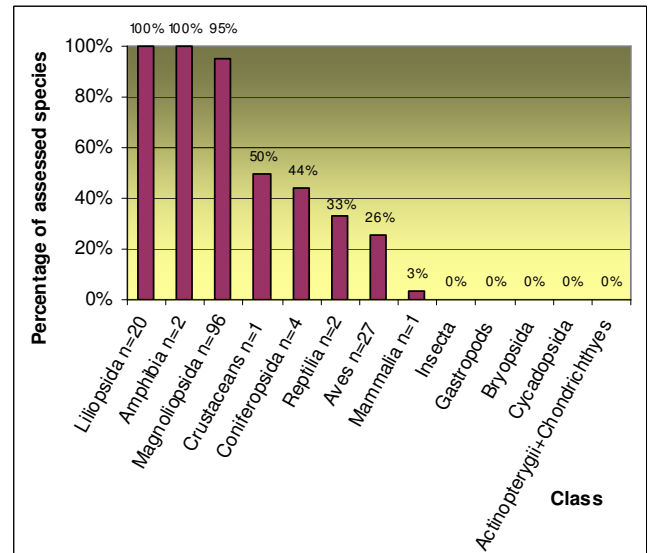


Photo credit: Birdlife International
The Fiji Long-legged Warbler (*Trichocichla rufa*) was first collected in 1890. Four specimens were collected

between then and 1894, after which, despite some unconfirmed sightings, the species was not seen again until 1974. In 2003, scientists from [BirdLife International](#) working in [Wabu Forest Reserve](#) on Fiji's main island discovered a small population of 12 pairs, along with two recently fledged chicks. The main threat to this species is the introduced mongoose, which is one of the biggest threats to ground-nesting birds in the Fiji Islands (Birdlife International, 2008b)

Assessed endemic species (not including EX or EW)

Fiji has had assessments completed for 153 endemic species. Information on their threat categories can be seen on Figure 11. The graph below shows the percentage of Fiji's assessed species that are endemic, by class.



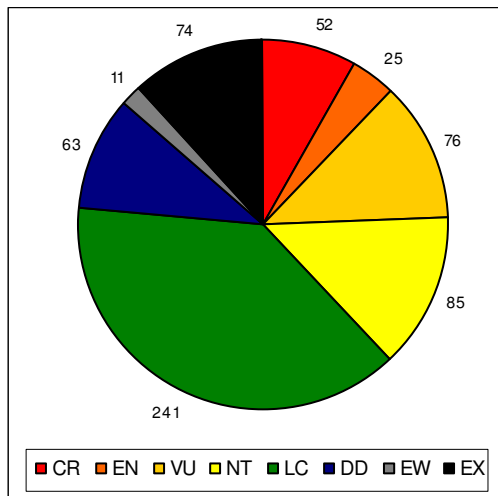
FRENCH POLYNESIA

Estimated number of described and assessed species

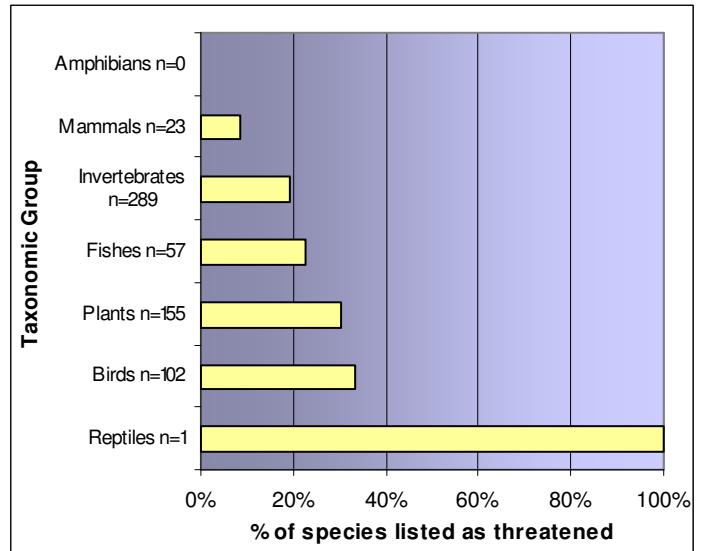
Taxonomic Group	Sub group	Estimated number of species described*	Number of Species Assessed
Plants	Mosses	222	0
	Ferns	191	0
	Cycads	2	0
	Conifers	1	0
	Dicots	671	152
	Monocots	277	3
	Algae	87	0
	Fungi	160	0
	Total Plants		1611
Birds		102	102
Mammals		23	23
Reptiles		5	1
Amphibians		0	0
Fish	Marine Fish	682	57
	Fresh-water Fish	48	0
Total Fish		730	57
Invertebrates	Insecta	198	0
	Arachnids	0	0
	Hard Corals	187	187
	Molluscs (Bivalves and Gastropods)	407	100
	Crustaceans	unknown	1
	Hydrozoa	unknown	1
Other Invertebrates	unknown	0	
Total Invertebrates		792	289
Totals		3263	627

*For sources, see page 2

Number of assessed species in each Red List category



Percentage of assessed species listed as threatened (CR, EN, VU categories)



Extinctions

There are 74 species listed as Extinct and 11 as Extinct in the Wild for French Polynesia.

	Aves	Gastropods	Magnoliopsida
EX	11	57	6
EW	11		

Partula snails were once widespread in French Polynesia. 46 species (75% of the total of 63 Partula species) became extinct (Woodland Park Zoo, 2004). A further 11 species are Extinct in the Wild, only surviving in ex situ populations. The cause of this major species loss was the carnivorous snail, *Euglandina rosea*, which was introduced to the region as a bio-control agent in a failed attempt to manage the garden pest, the giant African snail, *Lissachatina fulica*.

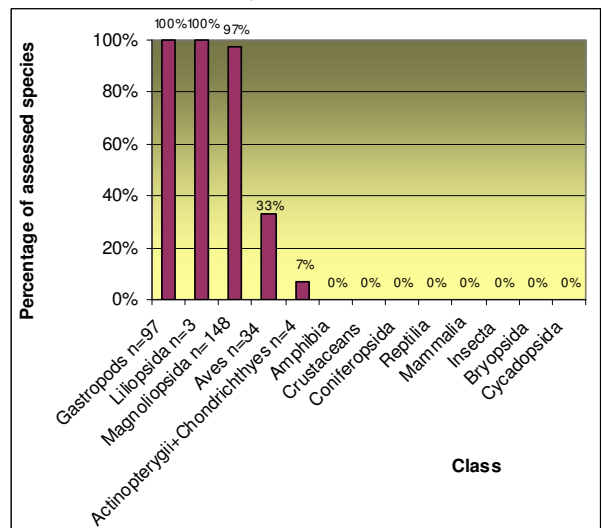
Any populations or species that have survived are small and isolated and listed as Critically Endangered due to the invasions of *E. rosea*.

Partula nodosa, CR

Captive *Partula nodosa*
Photo (c) WFF/Milan Trykar

Assessed endemic species (not including EX or EW)

Of 627 assessed species, 286 are listed as endemic to French Polynesia. The majority are Gastropods (many EX), dicotyledons and birds. Their threat status can be seen in Figure 11. The graph below shows the percentage of French Polynesia's assessed species that are endemic, by class.



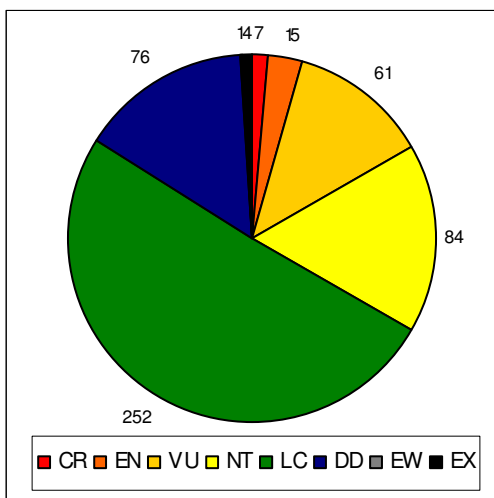
GUAM

Estimated number of described and assessed species

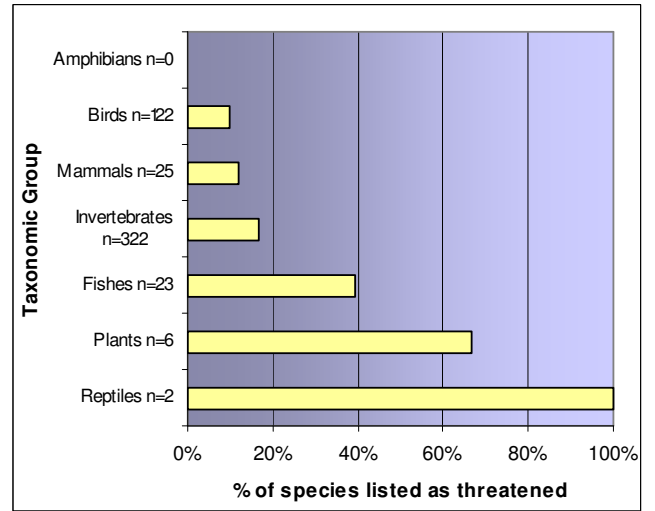
Taxonomic Group	Sub group	Estimated number of species described*	Number of Species Assessed
Plants	Mosses	5	0
	Ferns	46	0
	Cycads	4	1
	Conifers	1	0
	Dicots	139	5
	Monocots	137	0
	Algae	0	0
	Fungi	29	0
	Total Plants		361
Birds		122	122
Mammals		25	25
Reptiles		11	2
Amphibians		0	0
Fish	Marine Fish	1003	23
	Fresh-water Fish	19	0
Total Fish		1022	23
Invertebrates	Insecta	214	0
	Arachnids	9	0
	Hard Corals	260	260
	Molluscs (Bivalves and Gastropods)	77	61
	Crustaceans	unknown	1
	Hydrozoa	unknown	0
Other Invertebrates	unknown	0	
Total Invertebrates		560	322
Totals		2101	500

*For sources, see page 2

Number of assessed species in each Red List category



Percentage of assessed species listed as threatened (CR, EN, VU categories)



Extinctions

Gastropoda	Aves	Mammalia
EX (2)	EX (1)	EW (1)
Partula salifana Partula salifera	Myiagra freycineti	Gallirallus owstoni Pteropus tokudae

Guam Rail, *Gallirallus owstoni*

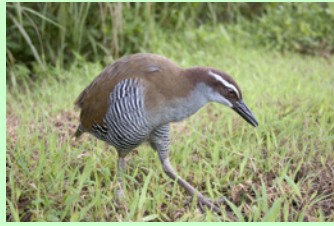


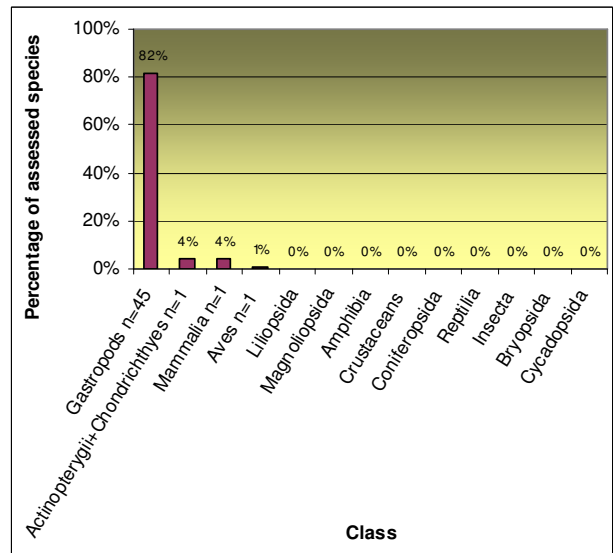
Photo credit Suzanne Medina/Guam Department of Agriculture

Prior to its extinction in 1987, the Guam rail occurred throughout the island of Guam. The rail disappeared from southern Guam in the mid 1970s and by 1980, only

10 rails were recorded (Fish and Wildlife Service, 2008). In a desperate move, approximately 20 birds were caught in the wild in the mid-1980s and placed in captive breeding on Guam as well as in the continental United States. No re-introductions are likely on Guam due to the presence of feral cats, rats and the invasive brown tree snake. Guam rails have been introduced on adjacent Rota in the Northern Marianas, where neither threat occurs.

Assessed endemic species (not including EX or EW)

Almost 10% (48 species) of Guam's assessed species are endemic. Almost all (45 species) are Gastropods. Figure 11 indicates their threat categories. The graph below shows the percentage of Guam's assessed species that are endemic, by class.



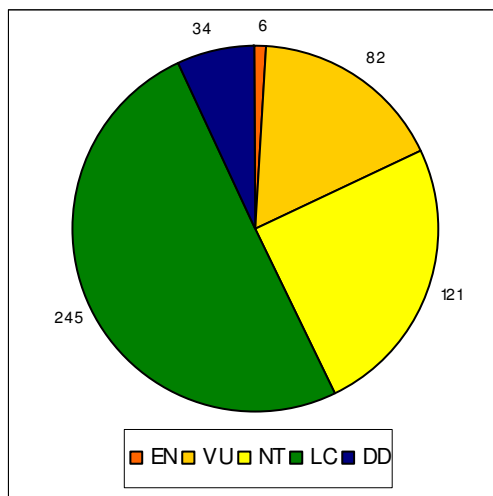
KIRIBATI

Estimated number of described and assessed species

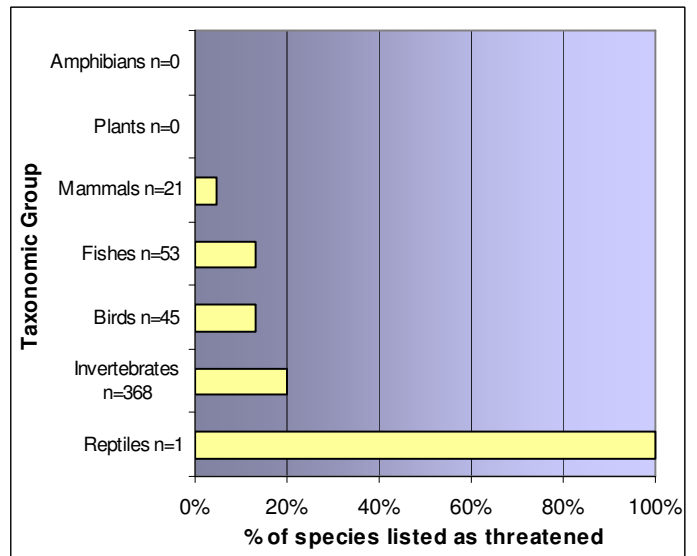
Taxonomic Group	Sub group	Estimated number of species described*	Number of Species Assessed
Plants	Mosses	5	0
	Ferns	3	0
	Cycads	0	0
	Conifers	0	0
	Dicots	31	0
	Monocots	22	0
	Algae	60	0
	Fungi	42	0
Total Plants		163	0
Birds		45	45
Mammals		21	21
Reptiles		3	1
Amphibians		0	0
Fish	Marine Fish	490	53
	Fresh-water Fish	4	0
Total Fish		494	53
Invertebrates	Insecta	67	0
	Arachnids	0	0
	Hard Corals	361	361
	Molluscs (Bivalves and Gastropods)	51	4
	Crustaceans	unknown	1
	Hydrozoa	unknown	2
	Other Invertebrates	unknown	0
Total Invertebrates		479	368
Totals		1205	488

*For sources, see page 2

Number of assessed species in each Red List category



Percentage of assessed species listed as threatened (CR, EN, VU categories)

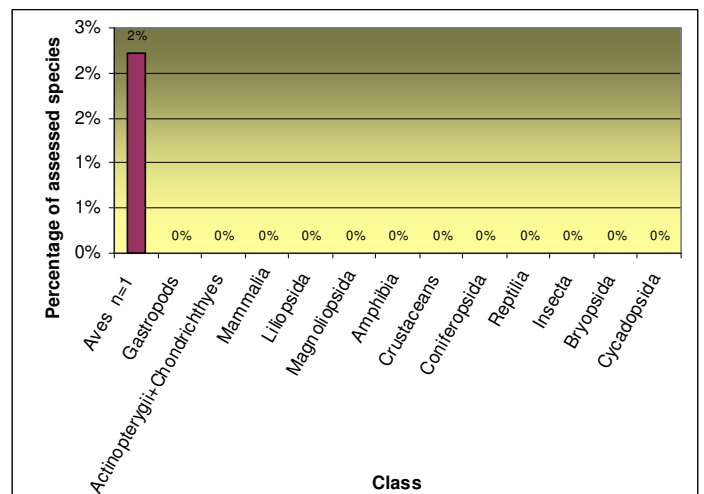


Extinctions

There have been no species assessed as Extinct in Kiribati.

Assessed endemic species (not including EX or EW)

One endemic species has been assessed on the 2008 Red List – the Kiritimati Reed-Warbler, *Acrocephalus aequinoctialis*, which is listed as Least Concern. The graph below shows the percentage of Kiribati's assessed species that are endemic, by class.



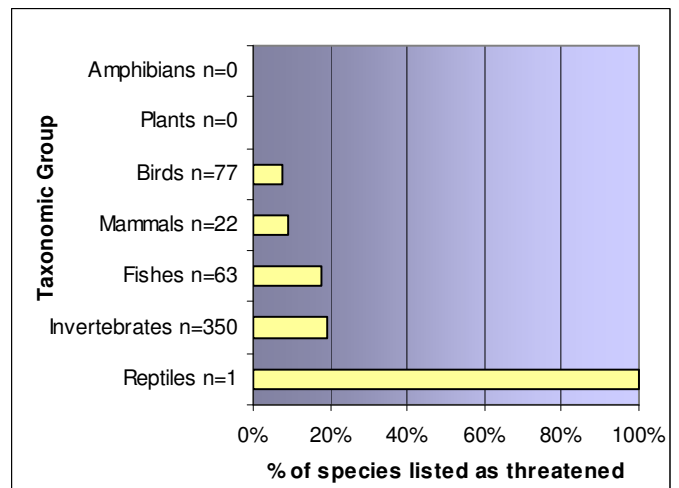
MARSHALL ISLANDS

Estimated number of described and assessed species

Taxonomic Group	Sub group	Estimated number of species described*	Number of Species Assessed
Plants	Mosses	2	0
	Ferns	3	0
	Cycads	2	0
	Conifers	0	0
	Dicots	74	0
	Monocots	48	0
	Algae	203	0
	Fungi	39	0
Total Plants		371	0
Birds		77	77
Mammals		22	22
Reptiles		6	1
Amphibians		0	0
Fish	Marine Fish	933	63
	Fresh-water Fish	4	0
Total Fish		937	63
Invertebrates	Insecta	8	0
	Arachnids	0	0
	Hard Corals	340	340
	Molluscs (Bivalves and Gastropods)	159	7
	Crustaceans	unknown	1
	Hydrozoa	unknown	2
	Other Invertebrates	unknown	0
Total Invertebrates		507	350
Totals		1920	513

*For sources, see page 2

Percentage of assessed species listed as threatened (CR, EN, VU categories)



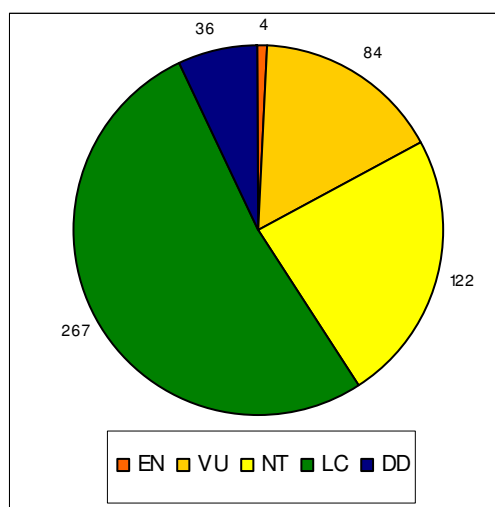
Extinctions

There are no assessed species listed as Extinct or Extinct in the Wild for the Marshall Islands.

Assessed endemic species (not including EX or EW)

There are no endemic species that have been assessed on the 2008 Red List for the Marshall Islands.

Number of assessed species in each Red List category



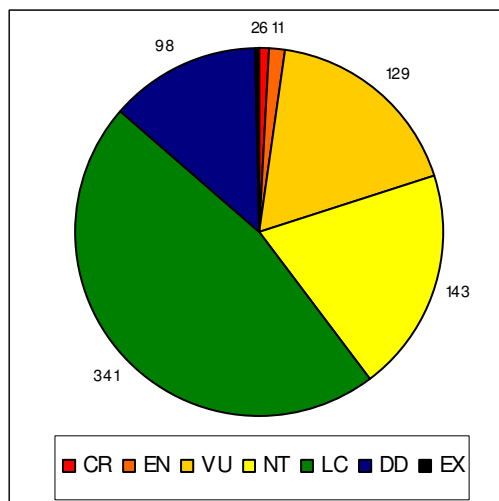
FEDERATED STATES OF MICRONESIA

Estimated number of described and assessed species

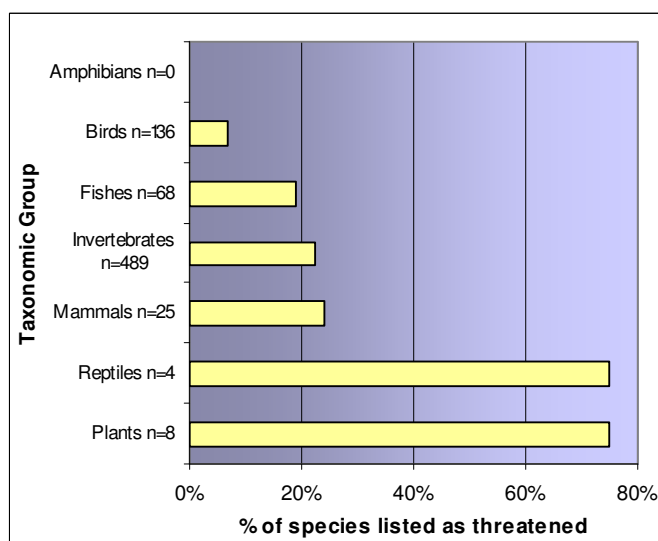
Taxonomic Group	Sub group	Estimated number of species described*	Number of Species Assessed
Plants	Mosses	25	1
	Ferns	34	0
	Cycads	2	1
	Conifers	0	0
	Dicots	227	5
	Monocots	197	1
	Algae	158	0
	Fungi	112	0
Total Plants		755	8
Birds		136	136
Mammals		25	25
Reptiles		14	4
Amphibians		0	0
Fish	Marine Fish	1136	68
	Fresh-water Fish	65	0
Total Fish		1201	68
Invertebrates	Insecta	482	0
	Arachnids	15	0
	Hard Corals	421	421
	Molluscs (Bivalves and Gastropods)	71	61
	Crustaceans	unknown	1
	Hydrozoa	unknown	6
	Other Invertebrates	unknown	0
Total Invertebrates		989	489
Totals		3120	730

*For sources, see page 2

Number of assessed species in each Red List category



Percentage of assessed species listed as threatened (CR, EN, VU categories)

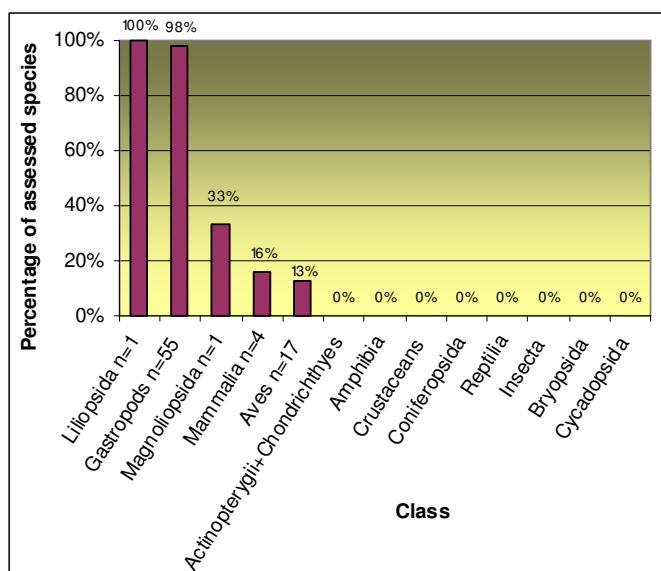


Extinctions

There are 2 Extinct birds listed for the Federated States of Micronesia: *Aplonis corvina* (Kosrae Starling) and *Porzana monasa* (Kosrae Crane).

Assessed endemic species (not including EX or EW)

The 2008 Red List contains assessments for 78 species endemic to the Federated State of Micronesia, the majority of which are Gastropods and Birds. Their threat status can be seen in Figure 11. The graph below shows the percentage of Micronesia's assessed species that are endemic, by class.



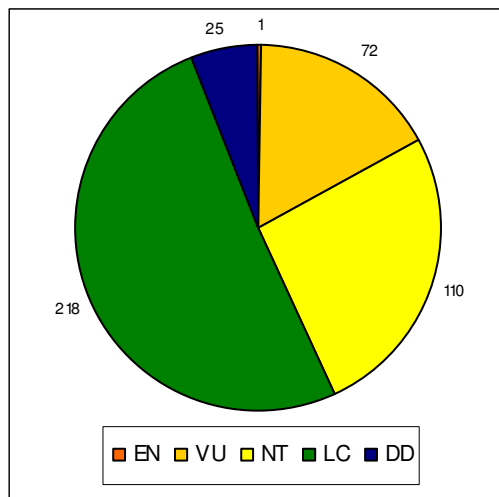
NAURU

Estimated number of described and assessed species

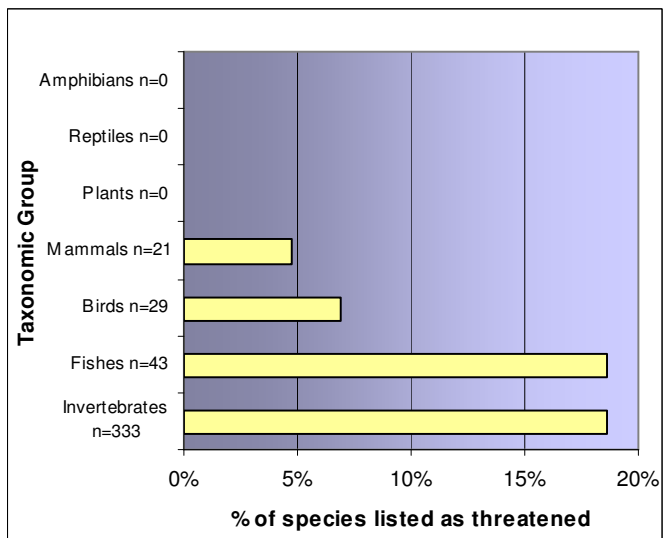
Taxonomic Group	Sub group	Estimated number of species described*	Number of Species Assessed
Plants	Mosses	0	0
	Ferns	0	0
	Cycads	0	0
	Conifers	0	0
	Dicots	6	0
	Monocots	13	0
	Algae	0	0
	Fungi	16	0
Total Plants		35	0
Birds		29	29
Mammals		21	21
Reptiles		0	0
Amphibians		0	0
Fish	Marine Fish	76	43
	Fresh-water Fish	2	0
Total Fish		78	43
Invertebrates	Insecta	11	0
	Arachnids	0	0
	Hard Corals	330	330
	Molluscs (Bivalves and Gastropods)	6	0
	Crustaceans	unknown	1
	Hydrozoa	unknown	2
	Other Invertebrates	unknown	0
Total Invertebrates		347	333
Totals		500+	426

*For sources, see page 2

Number of assessed species in each Red List category



Percentage of assessed species listed as threatened (CR, EN, VU categories)

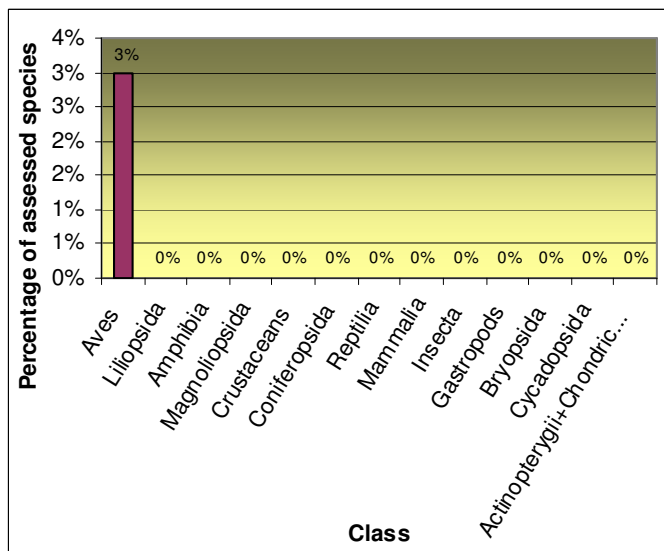


Extinctions

There are no assessed species listed as Extinct or Extinct in the Wild in Nauru.

Assessed endemic species (not including EX or EW)

There is one assessed endemic species in Nauru – the Nauru Weed-Warbler, *Acrocephalus rehsei*, which is listed as Vulnerable.



NEW CALEDONIA

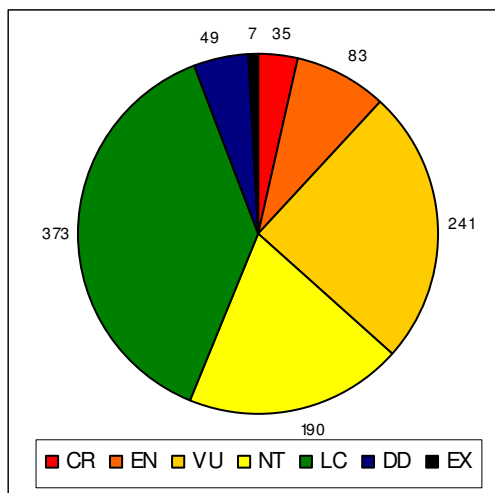
Estimated number of described and assessed species

Taxonomic Group	Sub group	Estimated number of species described*	Number of Species Assessed
Plants	Mosses	618	3
	Ferns	410	0
	Cycads	7	1
	Conifers	112	45
	Dicots	3934	208
	Monocots	979	22
	Algae	150	0
	Fungi	241	0
Total Plants		6451	279
Birds		147	147
Mammals		38	38
Reptiles		108	3
Amphibians**		1	1
Fish	Marine Fish	1679	97
	Fresh-water Fish	94	0
Total Fish		1773	97
Invertebrates	Insecta	931	3
	Arachnids	230	0
	Hard Corals	387	387
	Molluscs (Bivalves and Gastropods)	1330	16
	Crustaceans	unknown	1
	Hydrozoa	unknown	6
	Other Invertebrates	unknown	0
Total Invertebrates		2878	413
Totals		11396	978

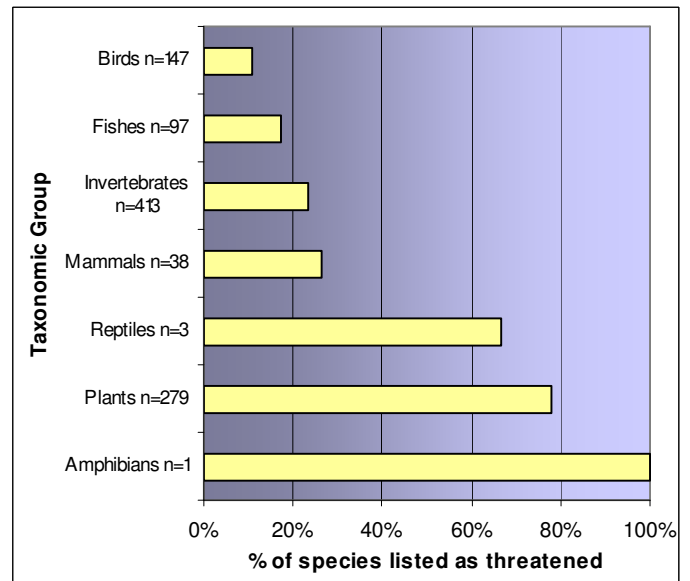
*For sources, see page 2

**The Amphibian listed in New Caledonia was introduced from Australia

Number of assessed species in each Red List category




Percentage of assessed species listed as threatened (CR, EN, VU categories)



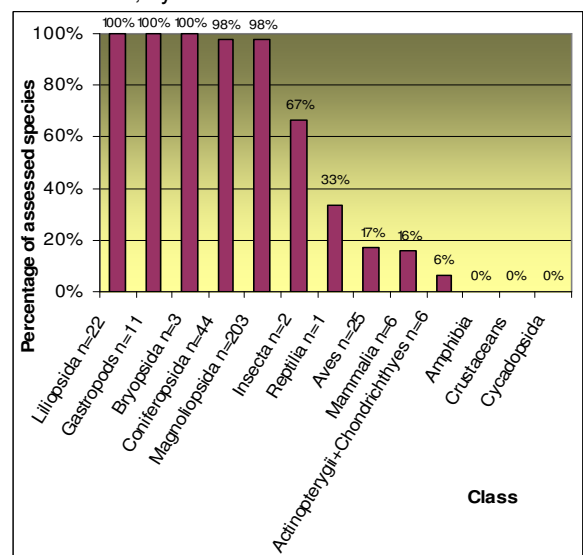
Extinctions

Aves (1)	Gastropoda (2)	Magnoliopsida (3)	Insecta (1)
<i>Porphyrio kukwiedei</i>	<i>Leuchocharis porphyrocheila</i> <i>Leuchocharis loyaltiensis</i>	<i>Xanthostemon sebertii</i> <i>Stenocarpus dumbeensis</i> <i>Cupaniopsis crassivalvis</i>	<i>Rhantus novacaledoniae</i>

<i>Pittosporum taniaum</i>	<i>Pittosporum taniaum</i>
	<i>Pittosporum taniaum</i> is a plant endemic to New Caledonia, which was first discovered in 1988, but declared extinct in 1994 (Baillie et al, 2004). In 2002, the species was re-discovered by a New Caledonia botanist, Bernard Suprin, who found two further plants of <i>P. taniaum</i> on the island. The area has been fenced off to protect the trees from grazing rabbits and deer that were introduced to the island for hunting.
Photo credit: Bernard Suprin, www.rhs.org.uk	

Assessed endemic species (not including EX or EW)

Out of 978 assessed species, 323 are endemic to New Caledonia. Figure 11 shows their threat status. The graph below shows the percentage of New Caledonia's assessed species that are endemic, by class.

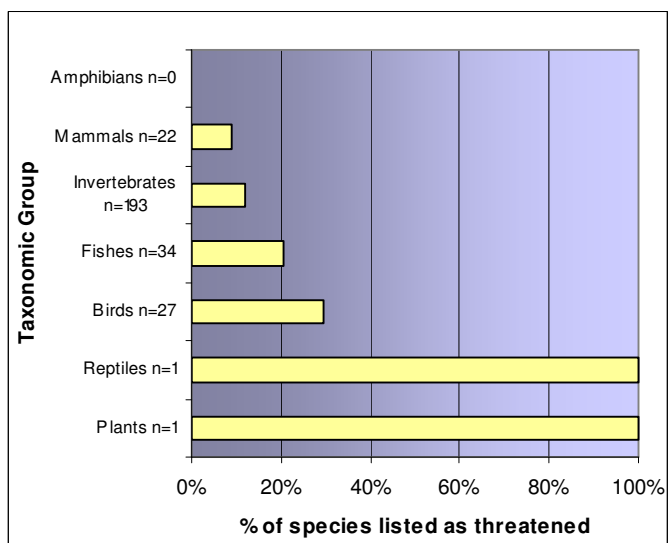


Estimated number of described and assessed species

Taxonomic Group	Sub group	Estimated number of species described*	Number of Species Assessed
Plants	Mosses	4	0
	Ferns	0	0
	Cycads	1	0
	Conifers	0	0
	Dicots	6	1
	Monocots	4	0
	Algae	1	0
	Fungi	132	0
Total Plants		148	1
Birds		27	27
Mammals		22	22
Reptiles		4	1
Amphibians		0	0
Fish	Marine Fish	221	34
	Fresh-water Fish	2	0
Total Fish		223	34
Invertebrates	Insecta	43	0
	Arachnids	8	0
	Hard Corals	190	190
	Molluscs (Bivalves and Gastropods)	8	0
	Crustaceans	unknown	1
	Hydrozoa	unknown	2
	Other Invertebrates	unknown	0
Total Invertebrates		249	193
Totals		673	278

*For sources, see page 2

Percentage of assessed species listed as threatened (CR, EN, VU categories)



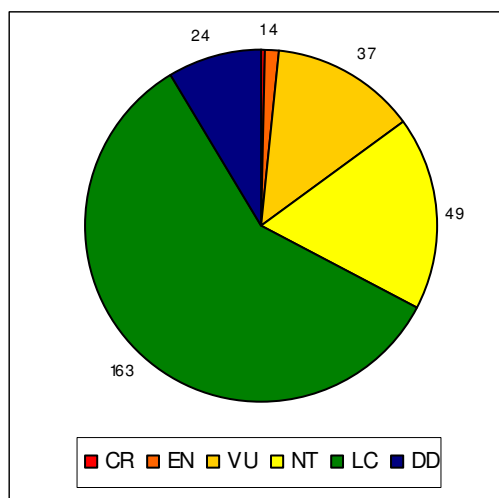
Extinctions

There are no species listed as Extinct or Extinct in the Wild for Niue.

Assessed endemic species (not including EX or EW)

There are no assessed species that are endemic to Niue.

Number of assessed species in each Red List category



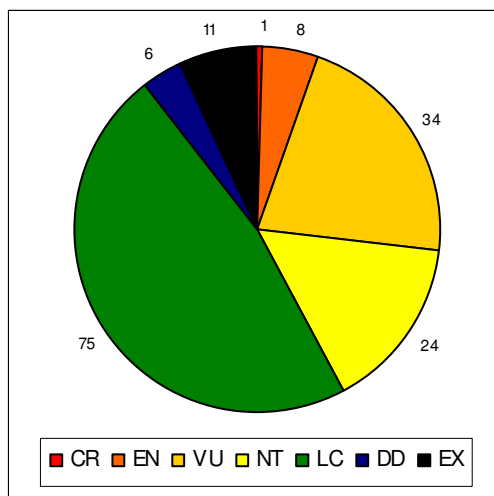
NORFOLK ISLAND

Estimated number of described and assessed species

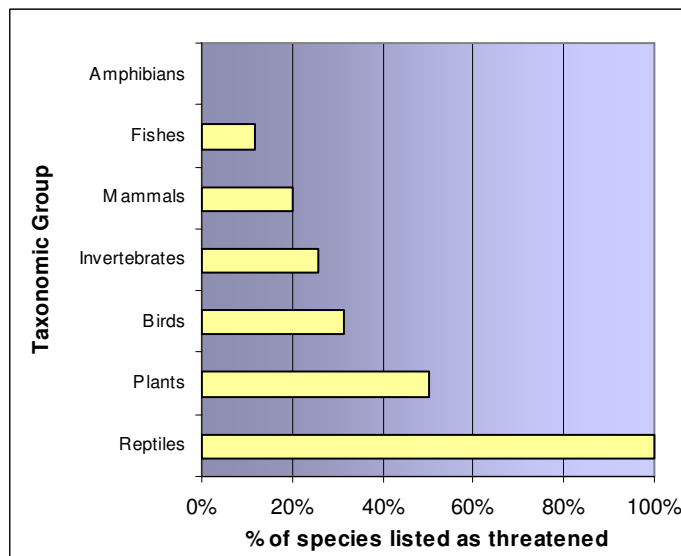
Taxonomic Group	Sub group	Estimated number of species described*	Number of Species Assessed
Plants	Mosses	46	0
	Ferns	32	0
	Cycads	0	0
	Conifers	3	1
	Dicots	96	1
	Monocots	34	0
	Algae	195	0
	Fungi	116	0
	Total Plants		522
Birds		51	51
Mammals		5	5
Reptiles		3	2
Amphibians		0	0
Fish	Marine Fish	299	17
	Fresh-water Fish	2	0
Total Fish		301	17
Invertebrates	Insecta	34	0
	Arachnids	0	0
	Hard Corals	61	61
	Molluscs (Bivalves and Gastropods)	75	20
	Crustaceans	unknown	0
	Hydrozoa	unknown	1
	Other Invertebrates	unknown	0
Total Invertebrates		170	82
Totals		1052	159

*For sources, see page 2

Number of assessed species in each Red List category



Percentage of assessed species listed as threatened (CR, EN, VU categories)



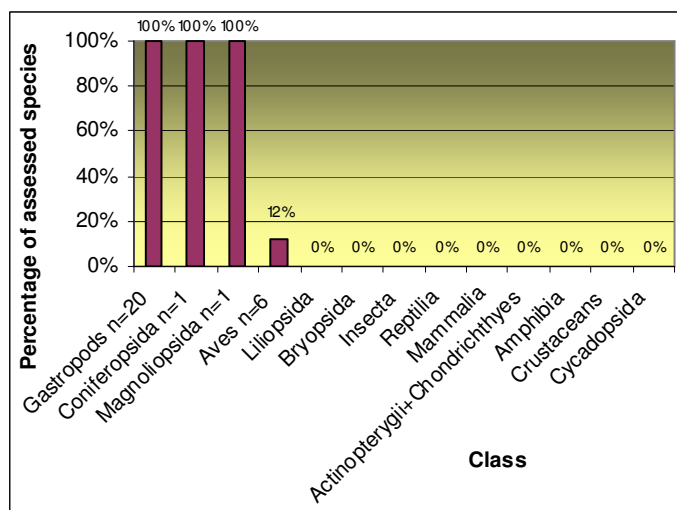
Extinctions

There are 11 assessed species listed as Extinct for Norfolk Island.

Aves	Gastropods	Magnoliopsida
4	6	1

Assessed endemic species (not including EX or EW)

There are 28 endemic species listed for Norfolk Island, the majority of which are Gastropods and listed as threatened (EN or VU) or Extinct, as shown in Figure 11. The graph below shows the percentage of Norfolk Island's assessed species that are endemic, by class.

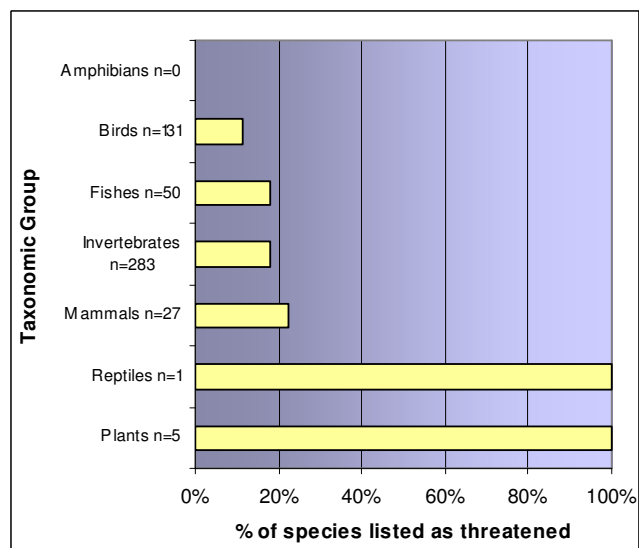


NORTHERN MARIANA ISLANDS

Percentage of assessed species listed as threatened (CR, EN, VU categories)

Estimated number of described and assessed species

Taxonomic Group	Sub group	Estimated number of species described*	Number of Species Assessed
Plants	Mosses	0	0
	Ferns	3	0
	Cycads	1	1
	Conifers	0	0
	Dicots	42	4
	Monocots	51	0
	Algae	0	0
	Fungi	3	0
Total Plants		100	5
Birds		131	131
Mammals		27	27
Reptiles		3	1
Amphibians		0	0
Fish	Marine Fish	792	50
	Fresh-water Fish	16	0
Total Fish		808	50
Invertebrates	Insecta	147	0
	Arachnids	6	0
	Hard Corals	260	260
	Molluscs (Bivalves and Gastropods)	28	18
	Crustaceans	unknown	1
	Hydrozoa	unknown	4
	Other Invertebrates	unknown	0
Total Invertebrates		441	283
Totals		1510	497



Extinctions

The Guam Rail, *Gallirallus owstoni* has been introduced to the Northern Marianas as it is Extinct in the Wild there (see Guam Country Profile). There is one assessed Gastropod listed as Extinct in the Northern Mariana Islands - *Partula salifera*, which was also found in Guam.

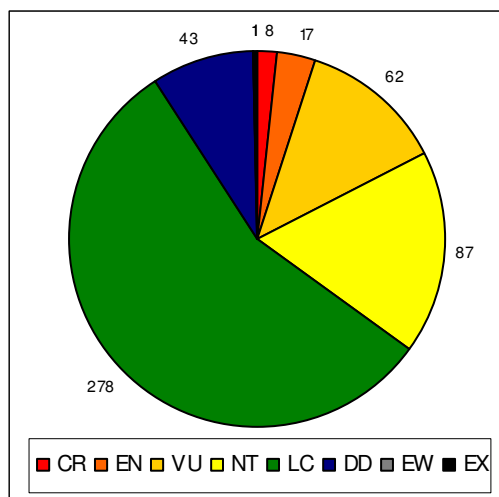
Assessed endemic species (not including EX or EW)

Out of almost 500 species assessed in the Northern Mariana Islands, 6 are endemic. Their threat status is seen in Figure 11.

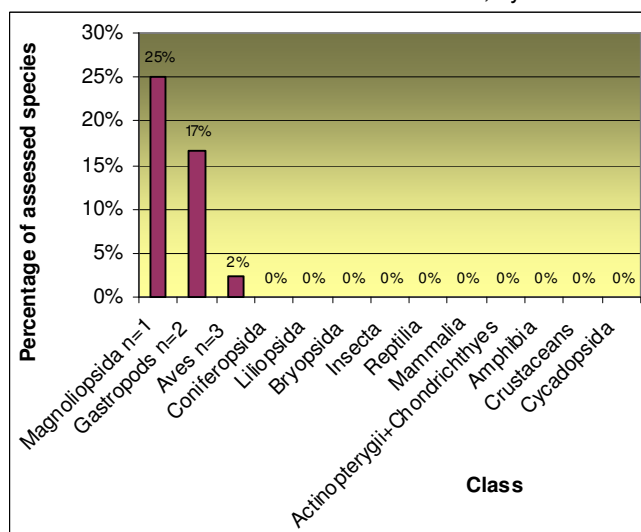
GASTROPODA	<i>Lamprocystis</i>	<i>hornbosteli</i>
GASTROPODA	<i>Partula</i>	<i>langfordi</i>
MAGNOLIOPSIDA	<i>Osmoxylon</i>	<i>marianense</i>
AVES	<i>Monarcha</i>	<i>takatsukasae</i>
AVES	<i>Zosterops</i>	<i>rotensis</i>
AVES	<i>Cleptornis</i>	<i>marchei</i>

*For sources, see page 2

Number of assessed species in each Red List category



The graph below shows the percentage of assessed species in the Northern Mariana Islands that are endemic, by class.



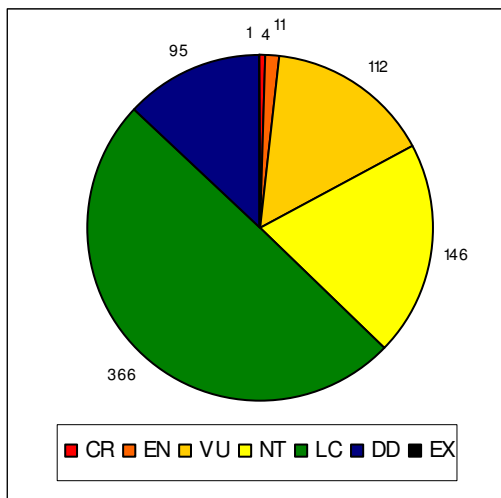
PALAU

Estimated number of described and assessed species

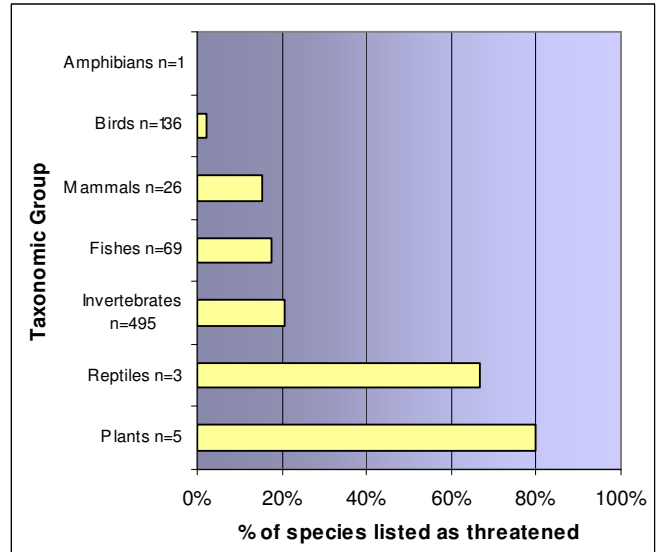
Taxonomic Group	Sub group	Estimated number of species described*	Number of Species Assessed
Plants	Mosses	0	0
	Ferns	25	0
	Cycads	4	1
	Conifers	0	0
	Dicots	125	4
	Monocots	42	0
	Algae	68	0
	Fungi	64	0
	Total Plants		328
Birds		136	136
Mammals		26	26
Reptiles		16	3
Amphibians		1	1
Fish	Marine Fish	1401	69
	Fresh-water Fish	41	0
Total Fish		1442	69
Invertebrates	Insecta	157	0
	Arachnids	6	0
	Hard Corals	425	425
	Molluscs (Bivalves and Gastropods)	63	63
	Crustaceans	unknown	1
	Hydrozoa	unknown	6
	Other Invertebrates	unknown	0
Total Invertebrates		651	495
Totals		2600	735

*For sources, see page 2

Number of assessed species in each Red List category



Percentage of assessed species listed as threatened (CR, EN, VU categories)

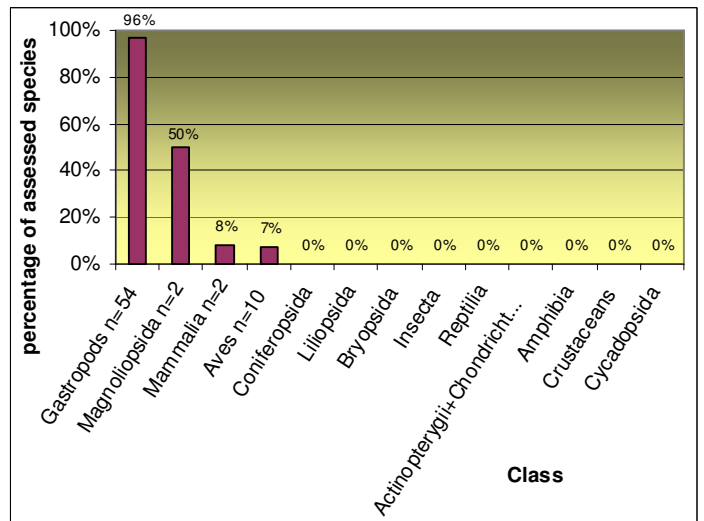


Extinctions

Palau has had one mammal assessed and listed as Extinct – the Large Palau Flying Fox, *Pteropus pilosus*.

Assessed endemic species (not including EX or EW)

There are 69 assessed endemic species in Palau. Almost all of Palau's 56 assessed Gastropods are endemic and Data Deficient. Threat categories for all of Palau's endemics are graphically represented in Figure 11. The graph below shows the percentage of Palau's assessed species that are endemic, by class.



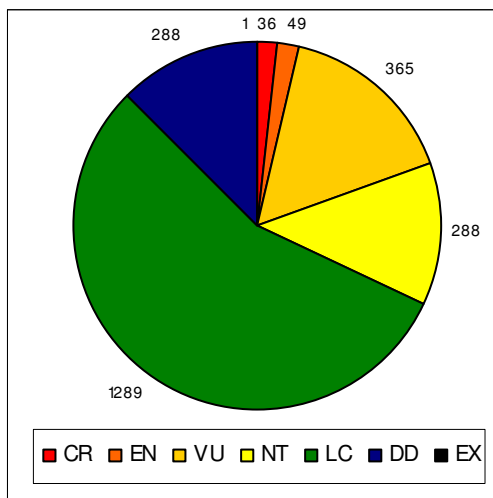
PAPUA NEW GUINEA

Estimated number of described and assessed species

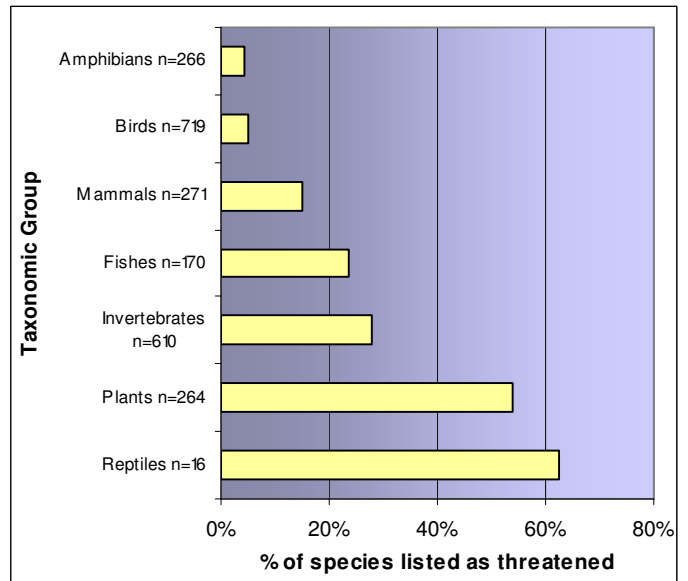
Taxonomic Group	Sub group	Estimated number of species described*	Number of Species Assessed
Plants	Mosses	1286	1
	Ferns	2414	0
	Cycads	10	6
	Conifers	110	33
	Dicots	8278	222
	Monocots	4367	2
	Algae	189	0
	Fungi	2240	0
Total Plants		18894	264
Birds		719	719
Mammals		271	271
Reptiles		227	16
Amphibians		266	266
Fish	Marine Fish	2719	170
	Fresh-water Fish	341	0
Total Fish		3060	170
Invertebrates	Insecta	1644	22
	Arachnids	8	0
	Hard Corals	560	560
	Molluscs (Bivalves and Gastropods)	669	7
	Crustaceans	unknown	15
	Hydrozoa	unknown	6
	Other Invertebrates	unknown	0
Total Invertebrates		2881	610
Totals		26318	2316

*For sources, see page 2

Number of assessed species in each Red List category



Percentage of assessed species listed as threatened (CR, EN, VU categories)

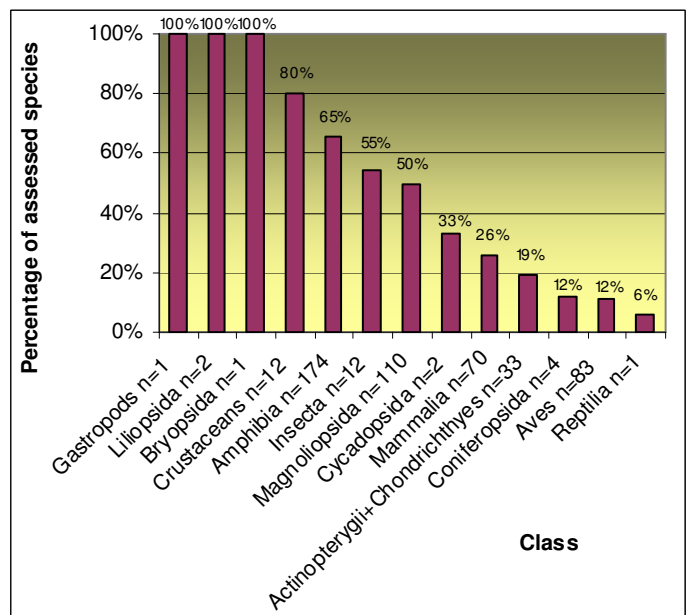


Extinctions

Given the high number of assessed species, the number of species assessed as Extinct is minute for Papua New Guinea. Only 1 insect is recorded as EX – a beetle, *Rhantus papuanus*.

Assessed endemic species (not including EX or EW)

1 in 5 of Papua New Guinea's assessed species are endemic to the country. Figure 11 shows their threat status by taxonomic group. Along with the Solomon Islands, Papua New Guinea has the highest number of assessed endemic mammals. Every assessed Class contains species endemic to Papua New Guinea as seen below. The graph below shows the percentage of Papua New Guinea's assessed species that are endemic, by class.



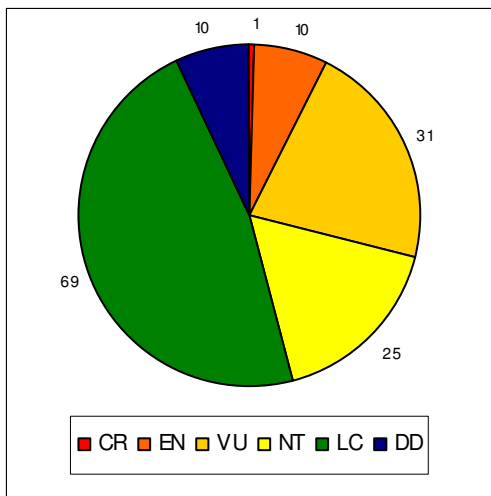
PITCAIRN ISLAND

Estimated number of described and assessed species

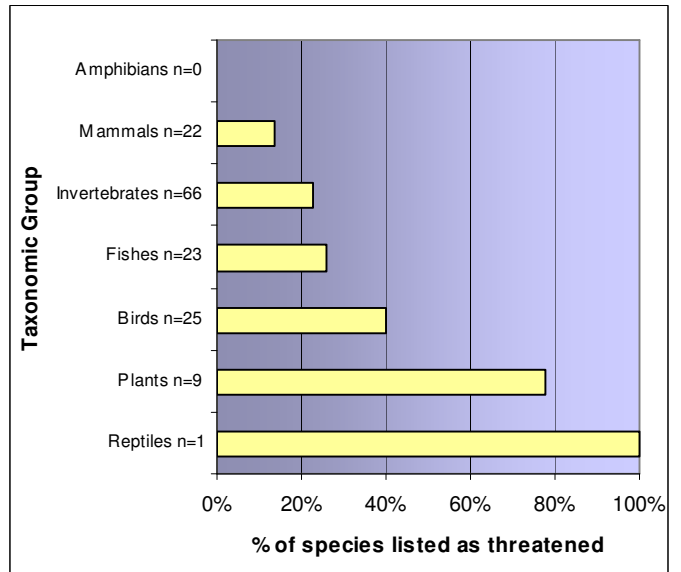
Taxonomic Group	Sub group	Estimated number of species described*	Number of Species Assessed
Plants	Mosses	3	0
	Ferns	5	0
	Cycads	0	0
	Conifers	0	0
	Dicots	20	9
	Monocots	6	0
	Algae	0	0
	Fungi	3	0
Total Plants		37	9
Birds		25	25
Mammals		22	22
Reptiles		2	1
Amphibians		0	0
Fish	Marine Fish	267	23
	Fresh-water Fish	2	0
Total Fish		269	23
Invertebrates	Insecta	19	0
	Arachnids	0	0
	Hard Corals	60	60
	Molluscs (Bivalves and Gastropods)	32	6
	Crustaceans	unknown	0
	Hydrozoa	unknown	0
	Other Invertebrates	unknown	0
Total Invertebrates		111	66
Totals		466	146

*For sources, see page 2

Number of assessed species in each Red List category



Percentage of assessed species listed as threatened (CR, EN, VU categories)

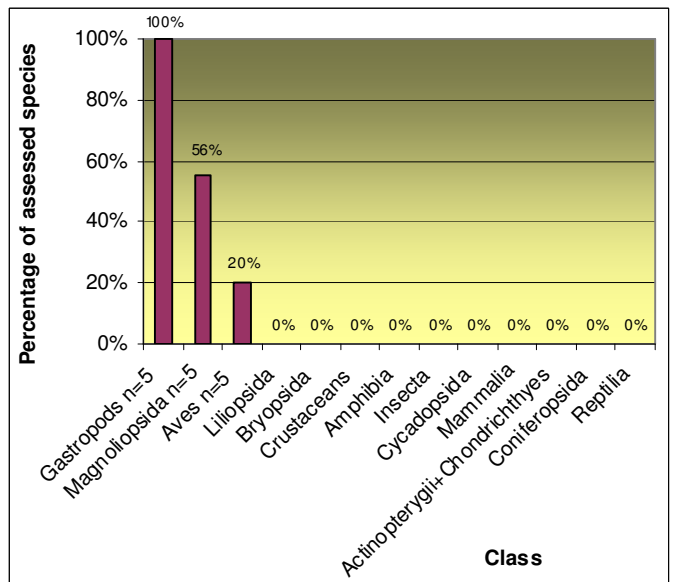


Extinctions

No assessed species have been listed as Extinct or Extinct in the Wild from Pitcairn Island.

Assessed endemic species (not including EX or EW)

Fifteen of Pitcairn Islands' 146 assessed species are endemic to Pitcairn Island. All are threatened species, either Endangered or Vulnerable as seen in Figure 11. The graph below shows the percentage of Pitcairn Islands' assessed species that are endemic, by class.



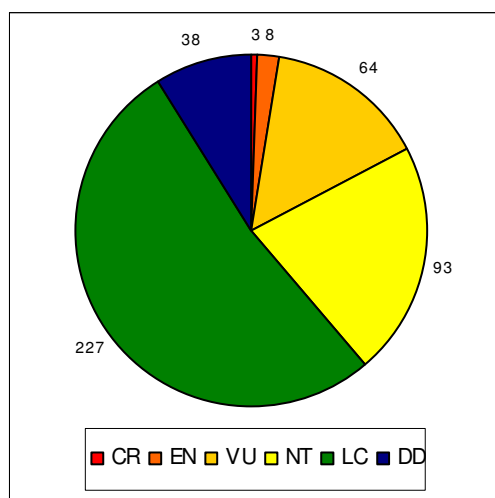
SAMOA

Estimated number of described and assessed species

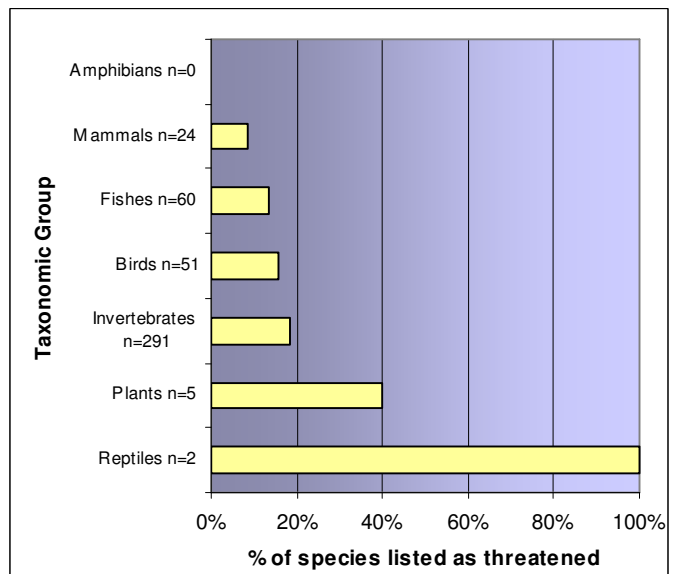
Taxonomic Group	Sub group	Estimated number of species described*	Number of Species Assessed
Plants	Mosses	162	0
	Ferns	99	0
	Cycads	0	0
	Conifers	0	0
	Dicots	279	3
	Monocots	178	2
	Algae	23	0
	Fungi	264	0
	Total Plants		1005
Birds		51	51
Mammals		24	24
Reptiles		21	2
Amphibians		0	0
Fish	Marine Fish	949	60
	Fresh-water Fish	31	0
Total Fish		980	60
Invertebrates	Insecta	497	0
	Arachnids	94	0
	Hard Corals	278	278
	Molluscs (Bivalves and Gastropods)	128	4
	Crustaceans	unknown	1
	Hydrozoa	unknown	7
	Other Invertebrates	unknown	1
Total Invertebrates		997	291
Totals		3078	433

*For sources, see page 2

Number of assessed species in each Red List category



Percentage of assessed species listed as threatened (CR, EN, VU categories)

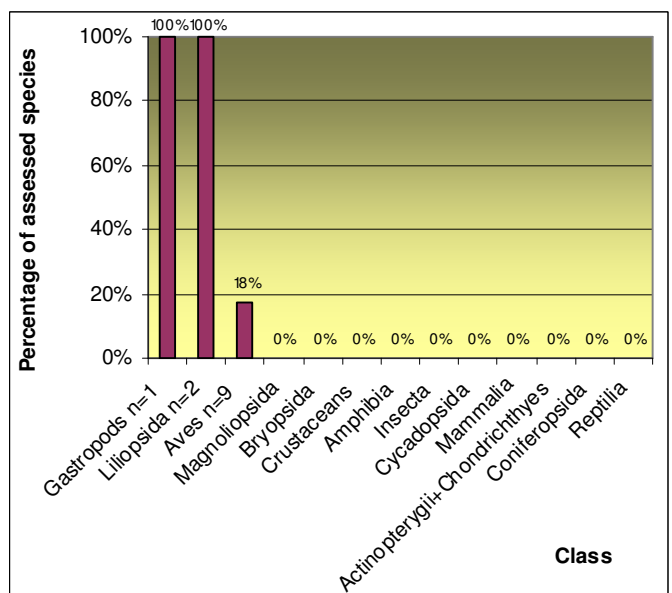


Extinctions

There are no assessed species listed as Extinct or Extinct in the Wild for Samoa.

Assessed endemic species (not including EX or EW)

Out of 433 assessed species, only 12 are endemic to Samoa, the majority of which (9 species) are birds. The threat status for Samoa's endemic species can be seen in Figure 11. The graph below shows the percentage of Samoa's assessed species that are endemic, by class.



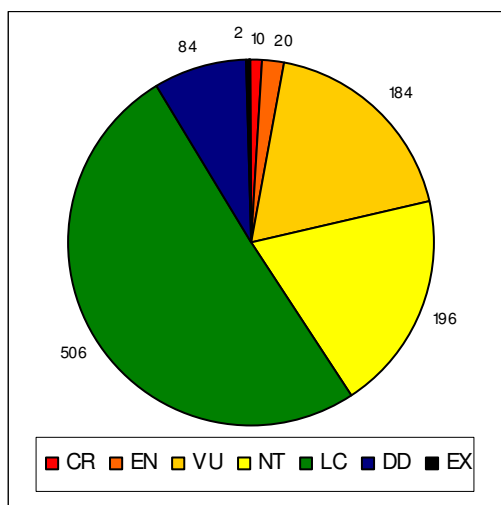
SOLOMON ISLANDS

Estimated number of described and assessed species

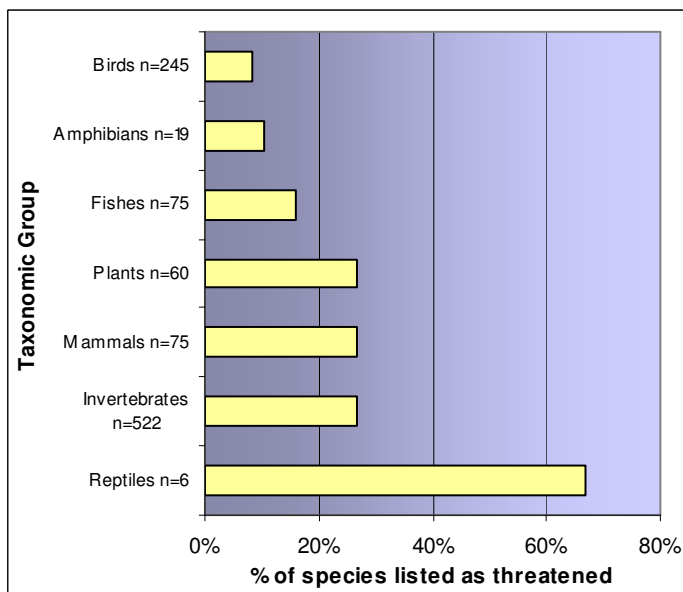
Taxonomic Group	Sub group	Estimated number of species described*	Number of Species Assessed
Plants	Mosses	68	0
	Ferns	233	0
	Cycads	6	1
	Conifers	13	8
	Dicots	1085	39
	Monocots	604	12
	Algae	164	0
	Fungi	424	0
	Total Plants		2597
Birds		245	245
Mammals		75	75
Reptiles		87	6
Amphibians		19	19
Fish	Marine Fish	746	75
	Fresh-water Fish	31	0
Total Fish		777	75
Invertebrates	Insecta	890	6
	Arachnids	59	0
	Hard Corals	503	503
	Molluscs (Bivalves and Gastropods)	347	6
	Crustaceans	unknown	1
	Hydrozoa	unknown	6
	Other Invertebrates	unknown	0
Total Invertebrates		1799	522
Totals		5599	1002

*For sources, see page 2

Number of assessed species in each Red List category



Percentage of assessed species listed as threatened (CR, EN, VU categories)

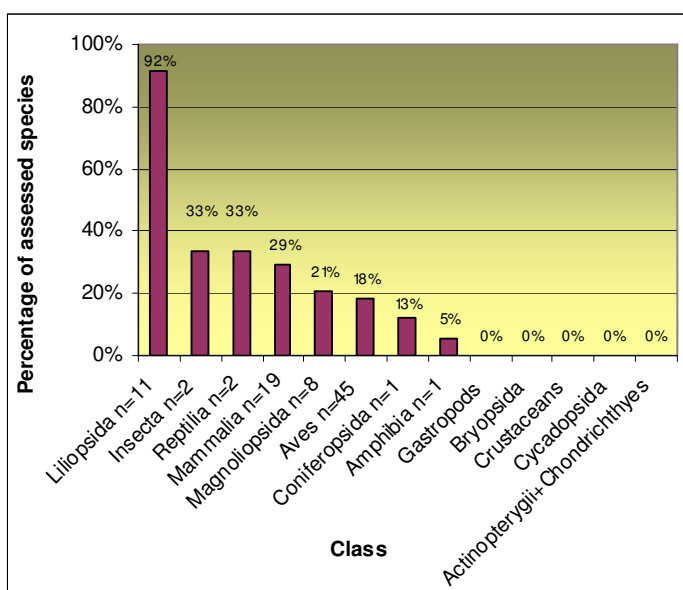


Extinctions

There are 2 assessed birds listed as Extinct in the Solomon Islands – the Thick-billed Ground Dove, *Gallicolumba salamonis* and the Choiseul Pigeon, *Microgoura meeki*.

Assessed endemic species (not including EX or EW)

There are 89 assessed species endemic to the Solomon Islands – nearly 10% of all assessed species. Along with Papua New Guinea, the Solomon Islands contain the highest number of assessed endemic mammals. The threat status of all endemics by taxonomic group can be seen in Figure 11. The graph below shows the percentage of the Solomon Islands' assessed species that are endemic, by class.



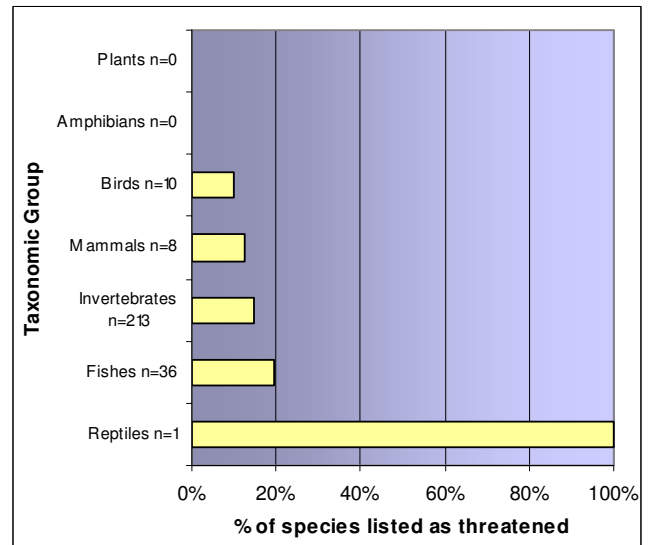
TOKELAU

Estimated number of described and assessed species

Taxonomic Group	Sub group	Estimated number of species described*	Number of Species Assessed
Plants	Mosses	0	0
	Ferns	0	0
	Cycads	0	0
	Conifers	0	0
	Dicots	25	0
	Monocots	2	0
	Algae	0	0
	Fungi	29	0
	Total Plants		56
Birds		10	10
Mammals		8	8
Reptiles		4	1
Amphibians		0	0
Fish	Marine Fish	188	36
	Fresh-water Fish	0	0
Total Fish		188	36
Invertebrates	Insecta	8	0
	Arachnids	1	0
	Hard Corals	208	208
	Molluscs (Bivalves and Gastropods)	3	2
	Crustaceans	unknown	1
	Hydrozoa	unknown	2
	Other Invertebrates	unknown	0
Total Invertebrates		220	213
Totals		486	268

*For sources, see page 2

Percentage of assessed species listed as threatened (CR, EN, VU categories)



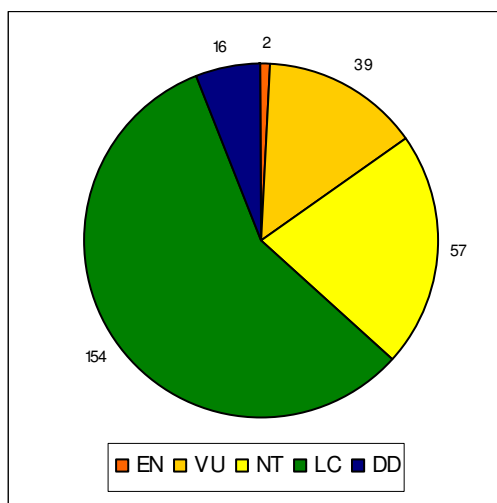
Extinctions

There are no assessed species listed as Extinct or Extinct in the Wild for Tokelau.

Assessed endemic species (not including EX or EW)

Tokelau has no assessed species that are endemic.

Number of assessed species in each Red List category



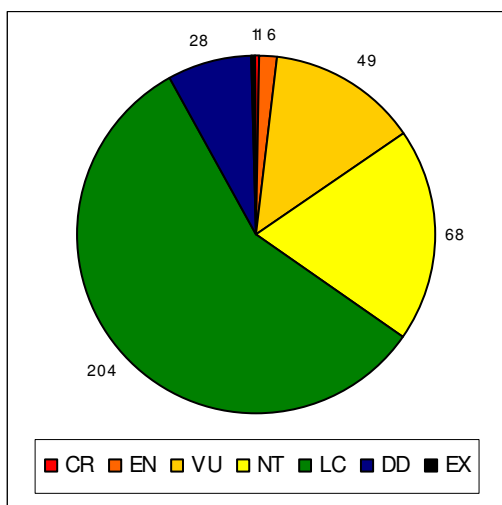
TONGA

Estimated number of described and assessed species

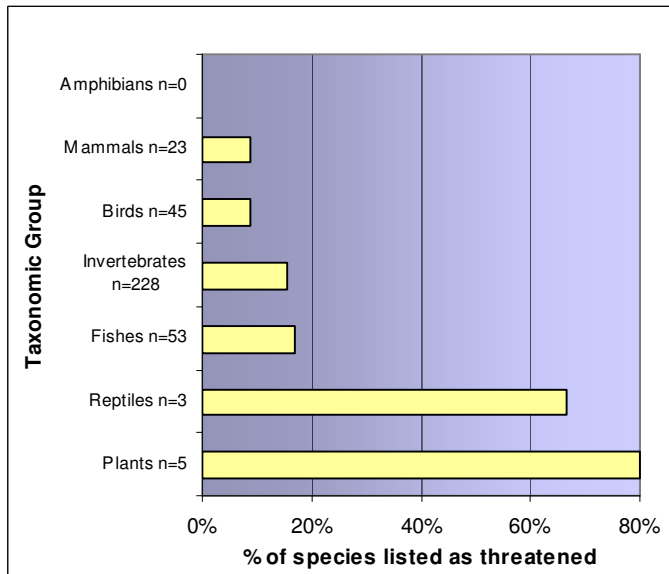
Taxonomic Group	Sub group	Estimated number of species described*	Number of Species Assessed
Plants	Mosses	6	0
	Ferns	35	0
	Cycads	4	1
	Conifers	1	1
	Dicots	128	3
	Monocots	137	0
	Algae	51	0
	Fungi	219	0
Total Plants		581	5
Birds		45	45
Mammals		23	23
Reptiles		16	3
Amphibians		0	0
Fish	Marine Fish	1139	53
	Fresh-water Fish	3	0
Total Fish		1142	53
Invertebrates	Insecta	125	0
	Arachnids	16	0
	Hard Corals	218	218
	Molluscs (Bivalves and Gastropods)	98	5
Crustaceans		unknown	1
Hydrozoa		unknown	4
Other Invertebrates		unknown	0
Total Invertebrates		457	228
Totals		2264	357

*For sources, see page 2

Number of assessed species in each Red List category



Percentage of assessed species listed as threatened (CR, EN, VU categories)



Extinctions

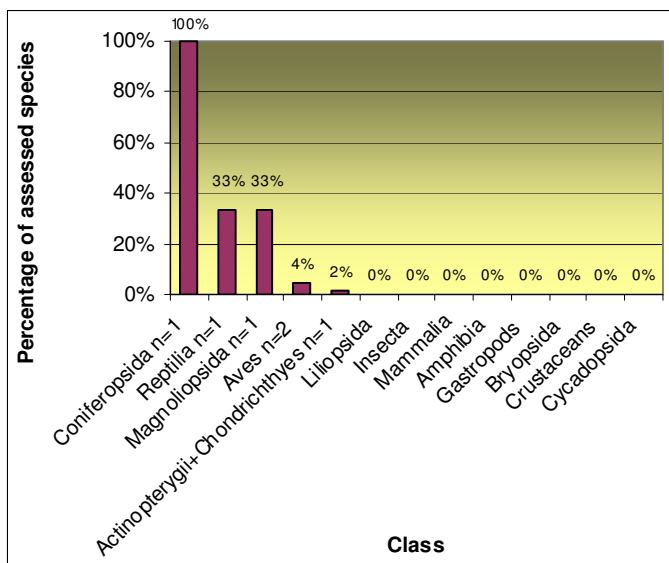
Tonga has one reptile that has been assessed as Extinct on the 2008 Red List: the Tonga Ground Skink, *Tachygia microlepis*.

Assessed endemic species (not including EX or EW)

Six of Tonga's 357 assessed species are endemic to Tonga. Their threat status can be seen in Figure 11.

REPTILIA	<i>Tachygia</i>	<i>microlepis</i>
CONIFEROPSIDA	<i>Podocarpus</i>	<i>pallidus</i>
MAGNOLIOPSIDA	<i>Aglaia</i>	<i>heterotricha</i>
ACTINOPTERYGII	<i>Epinephelus</i>	<i>chlorocephalus</i>
AVES	<i>Megapodius</i>	<i>pritchardii</i>
AVES	<i>Pachycephala</i>	<i>jacquinoti</i>

The graph below shows the percentage of Tonga's assessed species that are endemic, by class.



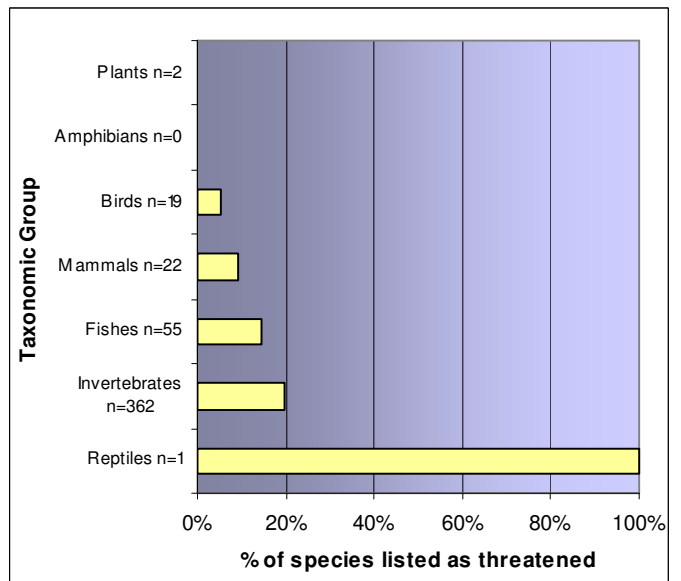
TUVALU

Estimated number of described and assessed species

Taxonomic Group	Sub group	Estimated number of species described*	Number of Species Assessed
Plants	Mosses	0	0
	Ferns	2	0
	Cycads	0	0
	Conifers	0	0
	Dicots	3	2
	Monocots	1	0
	Algae	1	0
	Fungi	114	0
Total Plants		121	2
Birds		19	19
Mammals		22	22
Reptiles		5	1
Amphibians		0	0
Fish	Marine Fish	188	55
	Fresh-water Fish	1	0
Total Fish		189	55
Invertebrates	Insecta	31	0
	Arachnids	0	0
	Hard Corals	353	353
	Molluscs (Bivalves and Gastropods)	20	6
	Crustaceans	unknown	1
	Hydrozoa	unknown	2
	Other Invertebrates	unknown	0
Total Invertebrates		404	362
Totals		760	461

*For sources, see page 2

Percentage of assessed species listed as threatened (CR, EN, VU categories)



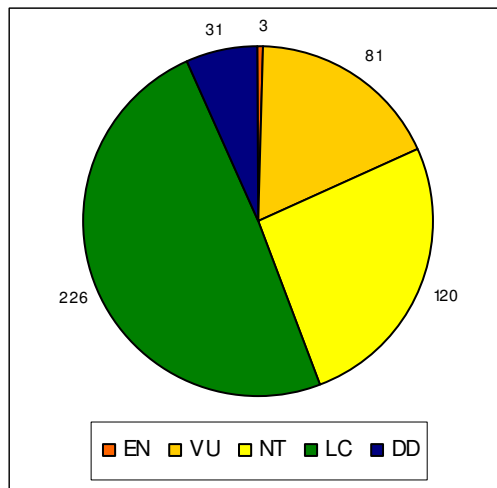
Extinctions

There are no assessed species listed as Extinct or Extinct in the Wild for Tuvalu.

Assessed endemic species (not including EX or EW)

Tuvalu has no assessed endemic species.

Number of assessed species in each Red List category



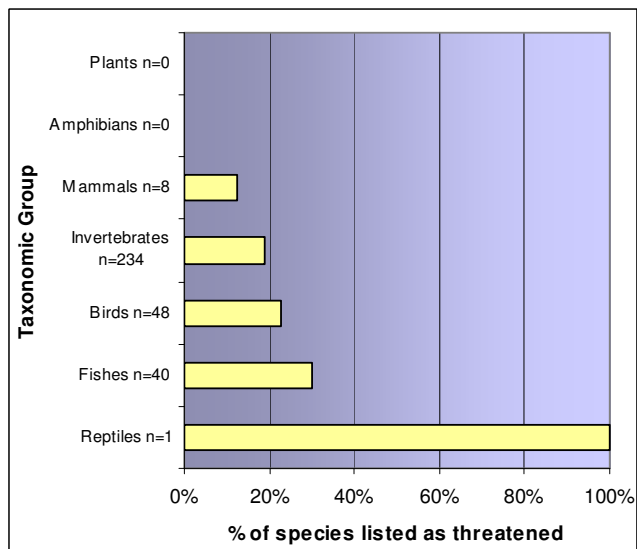
US MINOR OUTLYING ISLANDS

Estimated number of described and assessed species

Taxonomic Group	Sub group	Estimated number of species described*	Number of Species Assessed
Plants	Mosses	2	0
	Ferns	1	0
	Cycads	2	0
	Conifers	0	0
	Dicots	18	0
	Monocots	9	0
	Algae	10	0
	Fungi	0	0
Total Plants		42	0
Birds		48	48
Mammals		8	8
Reptiles		2	1
Amphibians		0	0
Fish	Marine Fish	103	40
	Fresh-water Fish	2	0
Total Fish		105	40
Invertebrates	Insecta	0	0
	Arachnids	0	0
	Hard Corals	231	231
	Molluscs (Bivalves and Gastropods)	unknown	1
	Crustaceans	unknown	0
	Hydrozoa	unknown	2
	Other Invertebrates	unknown	0
Total Invertebrates		231	234
Totals		436	331

*For sources, see page 2

Percentage of assessed species listed as threatened (CR, EN, VU categories)



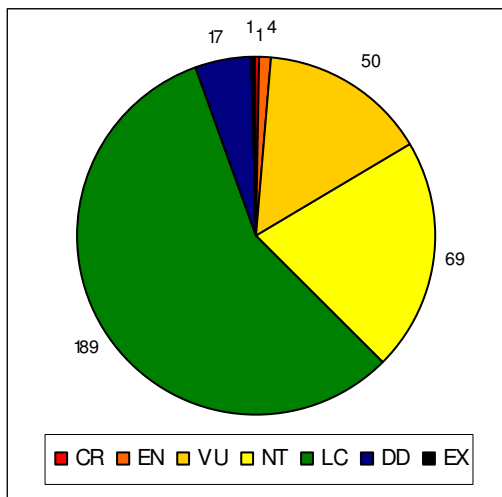
Extinctions

There is one assessed bird listed as Extinct in the US Minor Outlying Islands - the Wake Islands Rail, *Gallirallus wakensis*.

Assessed endemic species (Not including EX or EW)

The US Minor Outlying Islands have no assessed species that are endemic to the islands.

Number of assessed species in each Red List category



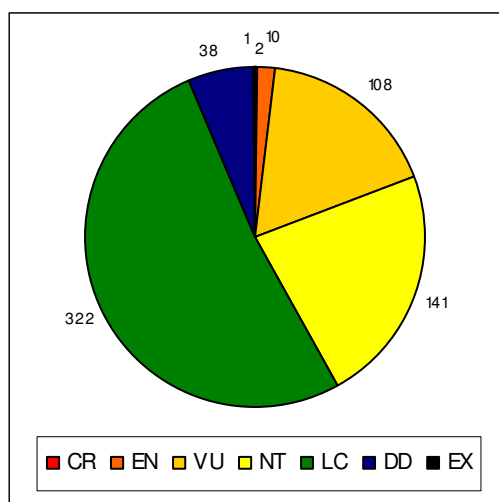
VANUATU

Estimated number of described and assessed species

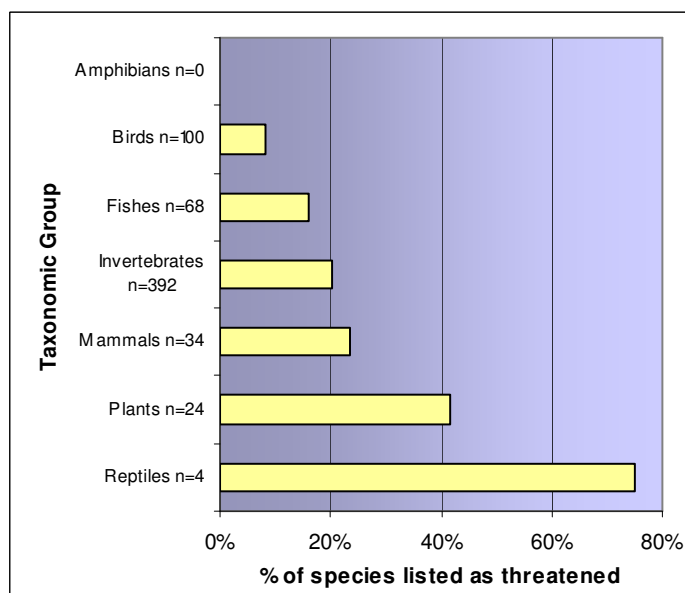
Taxonomic Group	Sub group	Estimated number of species described*	Number of Species Assessed
Plants	Mosses	136	0
	Ferns	269	0
	Cycads	5	1
	Conifers	11	4
	Dicots	693	9
	Monocots	393	10
	Algae	10	0
	Fungi	477	0
	Total Plants		1994
Birds		100	100
Mammals		34	34
Reptiles		22	4
Amphibians		0	0
Fish	Marine Fish	685	68
	Fresh-water Fish	34	0
Total Fish		719	68
Invertebrates	Insecta	301	1
	Arachnids	3	0
	Hard Corals	378	378
	Molluscs (Bivalves and Gastropods)	169	6
	Crustaceans	unknown	1
	Hydrozoa	unknown	6
	Other Invertebrates	unknown	0
Total Invertebrates		851	392
Totals		3720	622

*For sources, see page 2

Number of assessed species in each Red List category



Percentage of assessed species listed as threatened (CR, EN, VU categories)

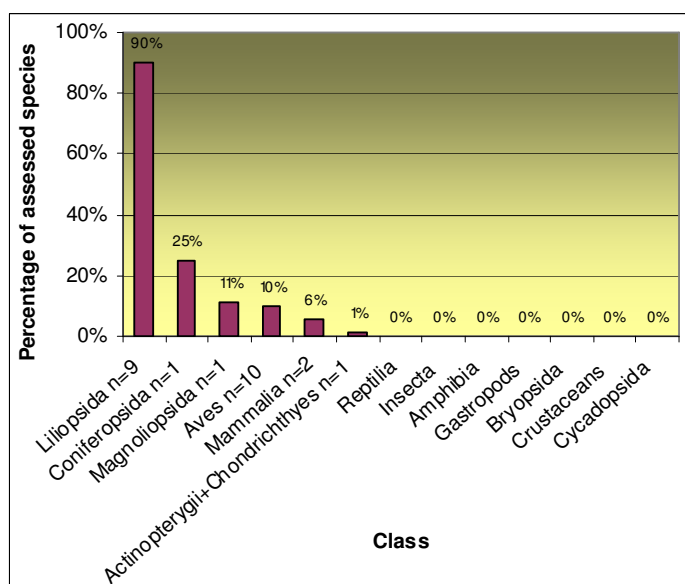


Extinctions

One assessed bird is listed as Extinct – the Tanna Ground Dove, *Gallicolumba ferruginea*.

Assessed endemic species (not including EX or EW)

There are 24 assessed species that are endemic to Vanuatu. The majority are palms and birds. The threat status of all endemics is seen in Figure 11. The graph below shows the percentage of Vanuatu's assessed species that are endemic, by class.



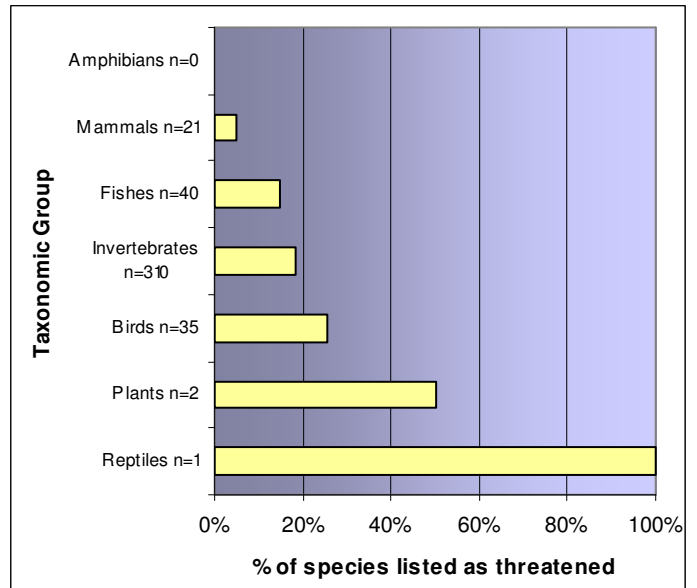
WALLIS AND FUTUNA

Estimated number of described and assessed species

Taxonomic Group	Sub group	Estimated number of species described*	Number of species assessed
Plants	Mosses	1	0
	Ferns	0	0
	Cycads	0	0
	Conifers	0	0
	Dicots	26	2
	Monocots	37	0
	Algae	0	0
	Fungi	5	0
Total Plants		69	2
Birds		35	35
Mammals		21	21
Reptiles		3	1
Amphibians		0	0
Fish	Marine Fish	90	40
	Fresh-water Fish	8	0
Total Fish		98	40
Invertebrates	Insecta	13	0
	Arachnids	1	0
	Hard Corals	306	306
	Molluscs (Bivalves and Gastropods)	49	0
	Crustaceans	unknown	0
	Hydrozoa	unknown	4
	Other Invertebrates	unknown	0
Total Invertebrates		369	310
Totals		595	409

*For sources, see page 2

Percentage of assessed species listed as threatened (CR, EN, VU categories)



Extinctions

There are no assessed species listed as Extinct or Extinct in the Wild in Wallis and Futuna.

Assessed endemic species (not including EX or EW)

There are no assessed species listed as endemic to Wallis and Futuna.

Number of assessed species in each Red List category

