

icpdr **iksd**
International Commission for the Protection of the Danube River
International Knowledge System for the Danube

2

Structure of Presentation

- The Danube River Basin, DRPC and ICPDR
- The ICPDR JAP
- WFD - Program of Measures

A horizontal strip of six small images. From left to right: 1. A group of people sitting around a table in a meeting. 2. A scenic view of a river with reeds and a bridge. 3. A group of people in traditional white and red folk costumes. 4. A river with a bridge and trees. 5. A group of people in dark suits standing together. 6. A close-up of a green plant.



- 10% of Europe
- 81 Mio Inhabitants
- 18 Countries

Most international River Basin in the World



COOPERATION IN THE DANUBE RIVER BASIN

Danube River Protection Convention – DRPC

- » The legal frame for co-operation to assure protection of water and ecological resources and their sustainable use in the Danube River Basin
- » signed: 29 June 1994, Sofia / in force: 22 October 1998

International Commission for the Protection of the Danube River - ICPDR

- » Mechanism for cooperation
- » 14 contracting parties, including EC



INVESTMENTS AND EXPECTED RESULTS OF THE JOINT ACTION PROGRAMME

Investments:

- » Municipal wastewater collection & treatment: 3.709 billion USD
- » Industrial waste water treatment: 0.276 billion USD
- » Agricultural projects and land use: 0.113 billion USD
- » Rehabilitation of wetlands: 0.323 billion USD

Nitrogen reduction:

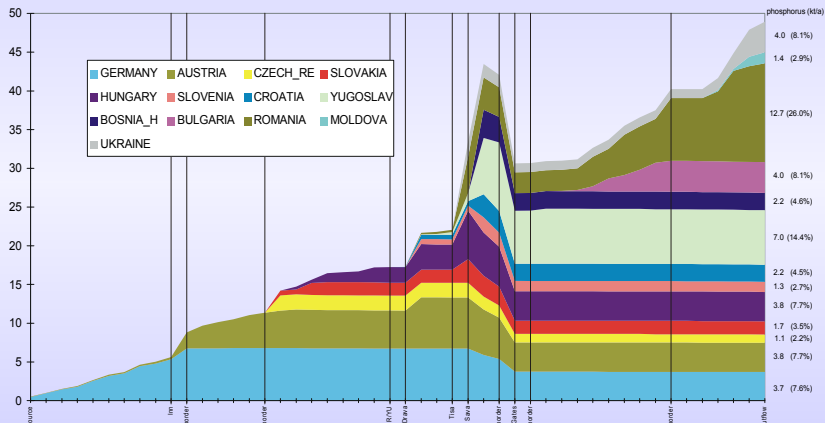
- » from point sources : 58,600 t/y
- » from diffuse sources : 60,000 t/y
- » total emission reduction : 22 %

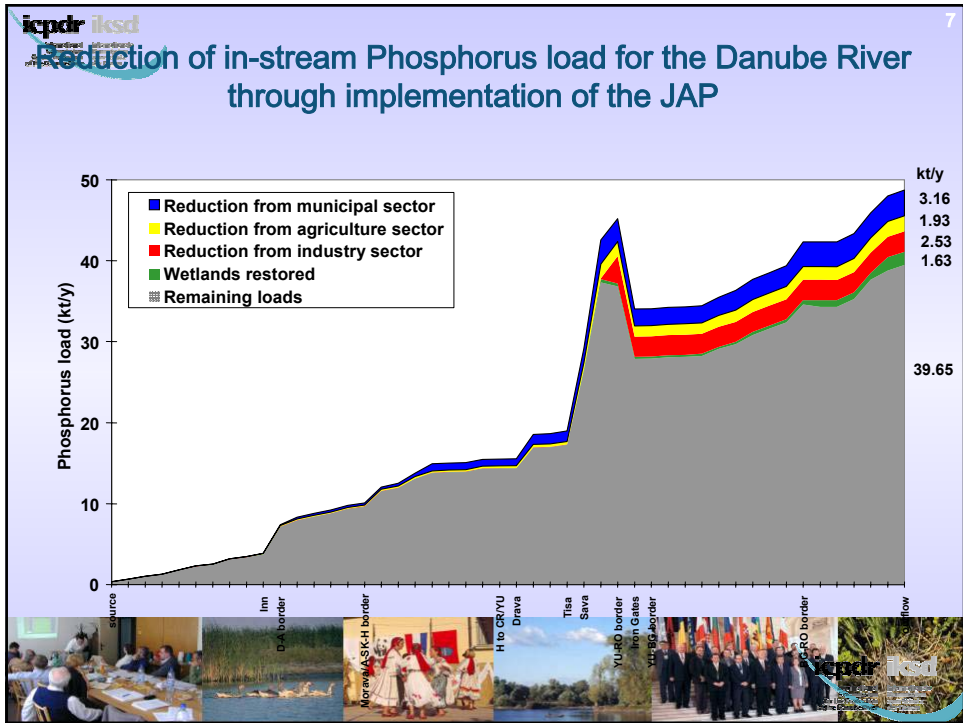
Phosphorus reduction:

- » from point sources : 12,000 t/y
- » from diffuse sources : 4,000 t/y
- » total emission reduction : 33 %



Annual Phosphorus Load in the Danube (in kt/y), subdivided over the countries of origin





EU Water Framework Directive

Danube Basin Analysis (WFD Roof Report)

The Danube River Basin District

River basin characteristics, impact of human activities and economic analysis required under Article 5, Annex II and Annex III, and inventory of protected areas required under Article 6, Annex IV of the EU Water Framework Directive (2000/60/EC)

Part A – Basin-wide overview
Short: "Danube Basin Analysis (WFD Roof Report 2004)"

The complete report consists of
Part A: Basin-wide overview, and
Part B: Detailed analysis of the Danube river basin countries

15 November 2004
Reporting deadline: 22 March 2005

Approved at the Ministerial Meeting – Vienna, 13 December 2004

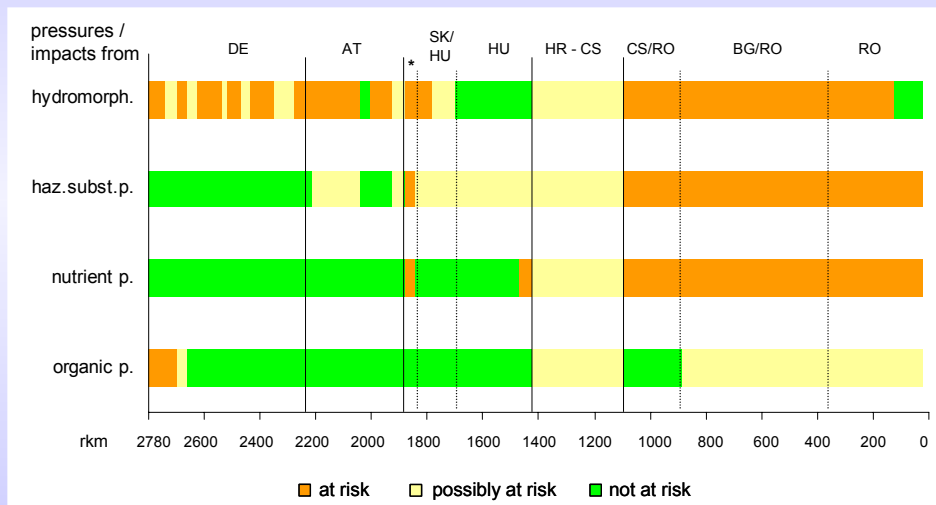
ROOF REPORT Key Problems Identified

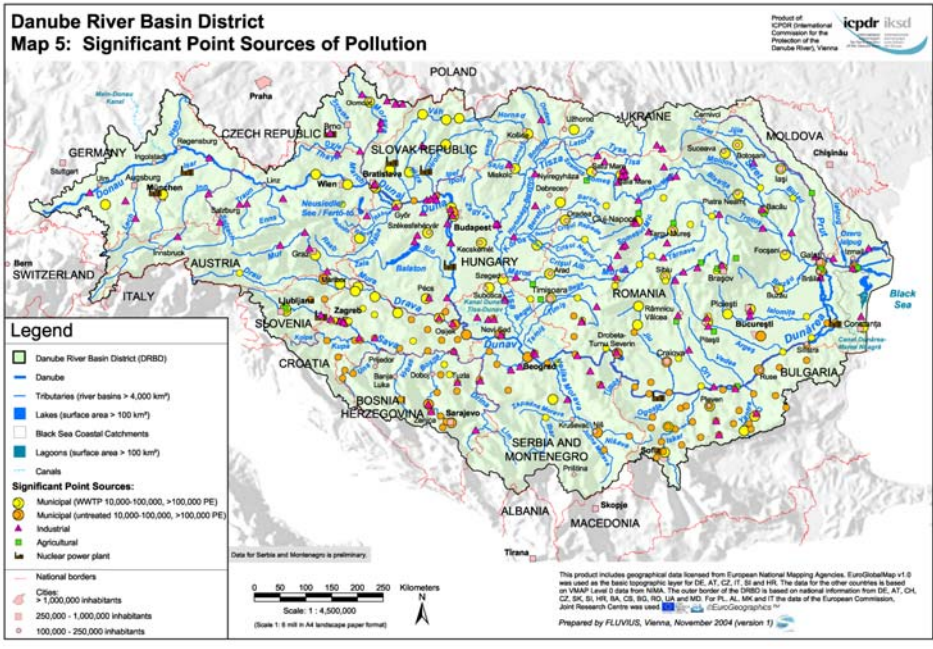
Pressures and Impact Assessment in the DRB

- ⇒ Organic pollution due to insufficient treatment of waste-water from municipalities
- ⇒ Nutrient loads still well above the levels of 1955
- ⇒ Hazardous substances
- ⇒ Hydromorphological alterations



DRB ANALYSIS – Risk of Failure





WFD Implementation timetable

- 📅 2003 - Transposition into national legislation
- 📅 2003 - Identification of River Basin District
- 📅 2004 - Analysis of pressures, impacts, use
- 📅 2006 - Monitoring programmes operational
- 📅 2006 - Start consultation with public
- 📅 2009 - River Basin Management Plan
- 📅 2010 - Pricing policies
- 📅 2012 - Programme of measures operational
- 📅 2015 - Environmental objectives



WFD- River Basin Management Plan Program of measures

Next steps are to integrate the results of the pressure and impact analysis with the results of the economic analysis of water uses in order to develop a coherent and integrated **programme of measures**, by 2009, for the water bodies at risk of failing to reach the environmental objectives.



WFD Approach to selection of measures

⇒ BASIC MEASURES:

- ⇒ minimum set of **obligatory** measures
- ⇒ WFD Art. 11/3 and Annex VI part A
 - UWWT-Directive
 - IPPC-Directive
 - Nitrates Directive incl. Action Programme

⇒ SUPPLEMENTARY MEASURES:

- Reduction of Phosphorus (detergents, etc)
- ⇒ set of **additional** measures
- ⇒ WFD Art. 11/4 and Annex VI part B
 - Legislative, administrative, economic instruments
 - educational projects, research etc.



Assessment of the effectiveness of all measures to achieve Good Ecological Status, 2008

- Evaluate the cost-effectiveness of potential measures
- Construct a cost-effective program of measures based on realistic scenarios
- Evaluate whether costs are disproportionate
- Assess the financial implication of the PoM
- Design the **most cost – effective combination** of measures.



The screenshot shows the website interface with a left-hand navigation menu containing folders like 'Home', 'Announcements', 'News and Events', 'The International Comms', 'Joint Action Programme', 'Annual Reports', 'Presidents & Delegation', 'Steering & Steering Gro', 'Permanent Secretariat', 'SAP/EG', 'ECOVEG', 'EMIG/EG', 'MALMEG', 'RBM/EG', 'Strategic/RG', 'Observers', 'Finance & Administrat', 'Legislation', 'ICPDR Document Cent', 'GEF Assistance to ICPDR', 'Databases', 'Emission Inventory', 'Useful Links', and 'History'. The main content area includes a 'welcome to the icpdr' header, logos for 'icpdr ikisd' and 'undp', and several featured articles with images and titles such as 'Calendar of Events', 'Joint Danube Survey', 'Danube Watch No. 1/2001', 'ICPDR Document Centre', 'JDS Investigation of the Tisza River', and 'Joint Action Programme for the Danube River Basin'.

for further information see www.icpdr.org

Thank you!

