



MRC – GTZ Watershed Management Programme

Introduction to BDP Sub-Area Meeting

25-26 February 2010
Champasak, Province
Laos-PDR

Min Bunnara

What is Watershed Management good for?

Maintain or restore
the watershed functions

Water quality
Water quantity
People's needs



What can Watershed Management do?

Help people get organized to...

...keep good quality water

...get enough water

...avoid erosion

...know what to do in cases
of floods and droughts

...be prepared for climate change

Watershed Management and River Basin Management

Watershed Management supports the planning processes of RBM at the lower = management levels

What does MRC – GTZ WSMP do in the Watershed?

1. Creating the Dialogue
2. Assessment of watershed situation
3. Preparing 'WSM plan of action'
4. Integration and implementation of WSM plan of action
5. Monitoring and Evaluation

Creating the Dialogue

Watershed Committee:

- ✓ **Participatory** and integrated watershed **Management Planning**
- ✓ Engage different **stakeholders** at provincial, district and communes levels
- ✓ Share information & perspectives on **current situation, trends and preferred futures**



Assessment of watershed situation

Watershed Profile:

- Collect information on the **current situation**
- Identify **issues** of watersheds that need to be addressed,
- Get **information** for necessary interventions
- Provide **baseline data** for impact monitoring



Developing Actions and solutions

Plan of Action:

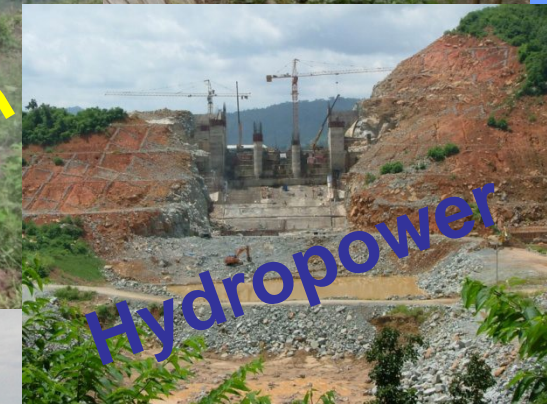
- ✓ Analyze the **critical issues**
- ✓ Agree on the **priority issues** to be integrated into PoA,
- ✓ Propose **possible solutions** for priority issues,
- ✓ Prepare **operational plan** with baseline and targets, time, responsibilities and possible financial resources



Integration and Implementation

Development Plan

- Two **issues** in each pilot watershed being **implemented**
- **Integrate** issues into country specific socio economic development plan

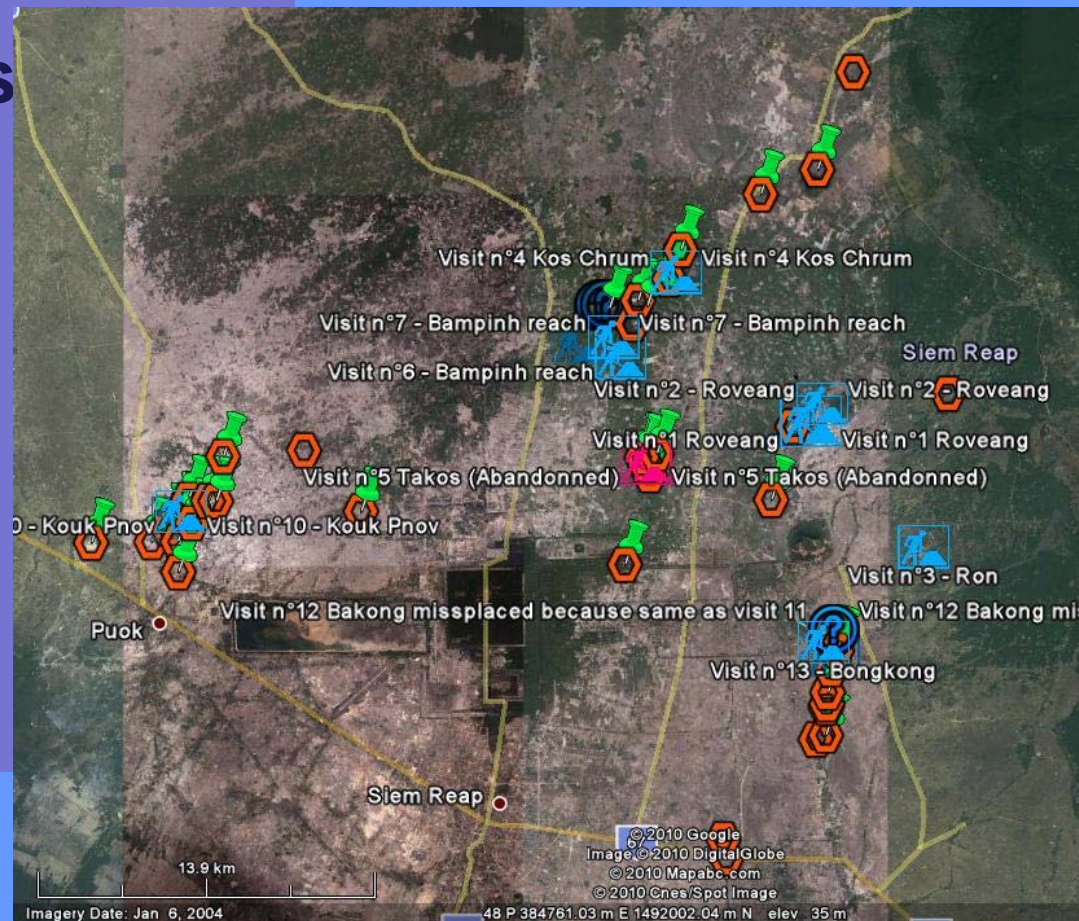


Some typical issues:

Monitoring and Evaluation

Impact monitoring

- Develop **indicators** for implemented activities
- **Data gathering**
- **Conclusions**
- **Recycle**
Plan of Action



What does MRC – GTZ WSMP do?

1. Develop WSM **Plan of Action**
2. **Replicate** pilot experiences
3. Develop **training** courses for integrated watershed management
4. Promote Integrated Watershed Management in the **legal framework** of members countries.



Thank you