

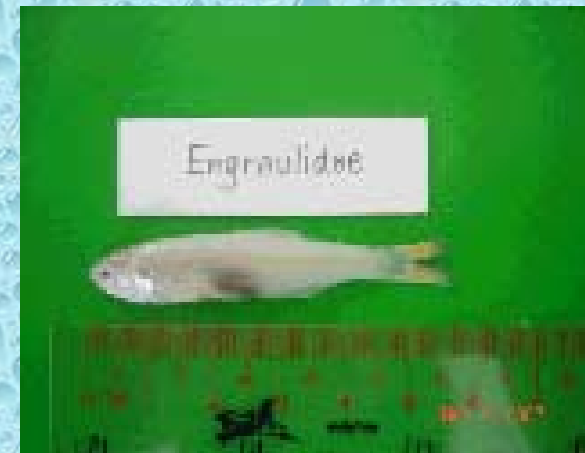
GROUP11

**Results on Fish Larvae
&
Fish Juvenile Samples Identification**

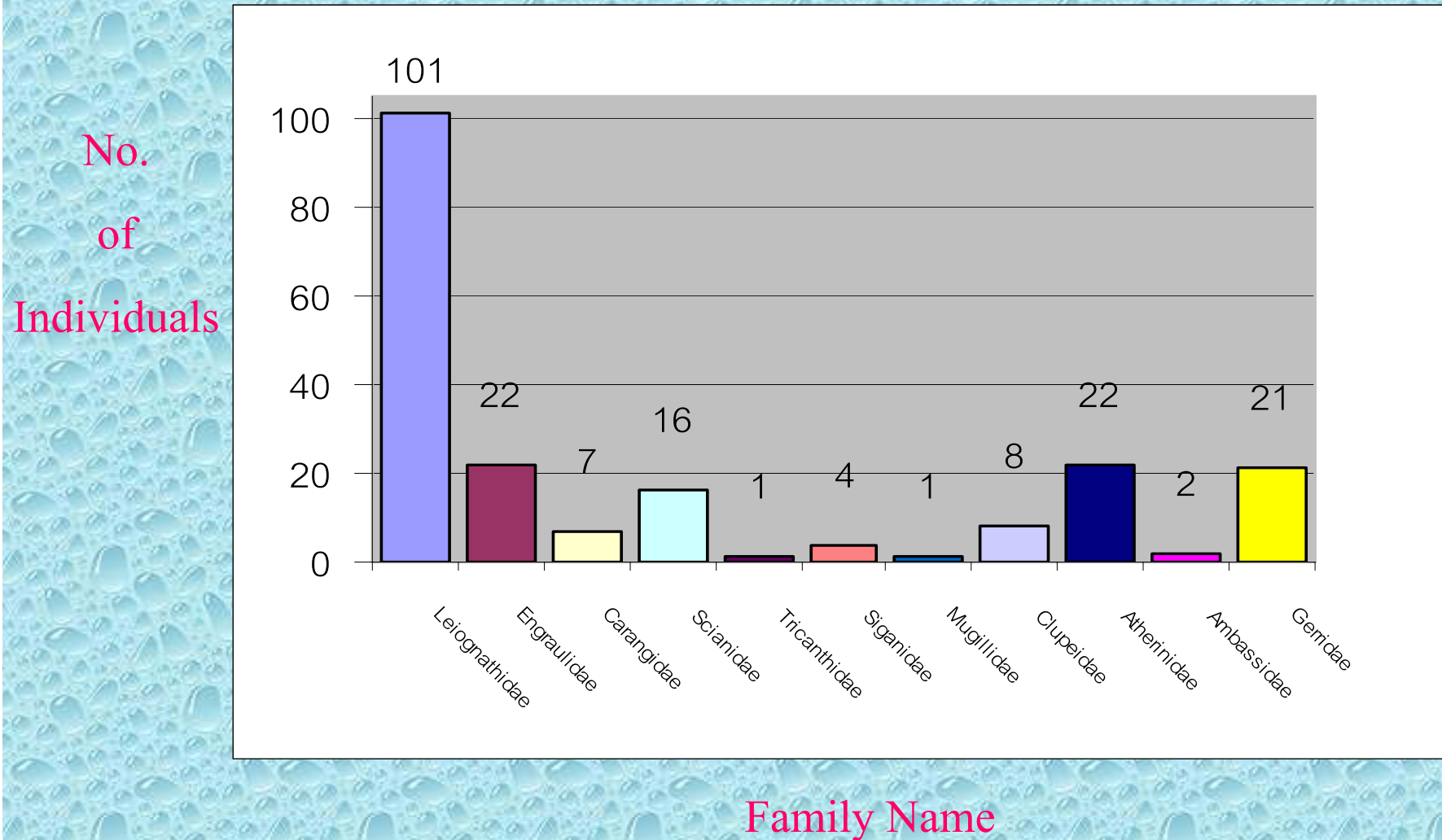
May 29, 2007

Jennifer Viron & Rhoda Servidad

Fish Juvenile Samples Identified (Pushnet Operation)



Number of Juvenile Fish/hour (1 kg. sample)



Fish Larvae Samples Identified

(Bongo Net 330 um)



Apogonidae



Nemipteridae



Pegasidae



Engraulidae



Cynoglossidae



Carangidae



Callionymidae



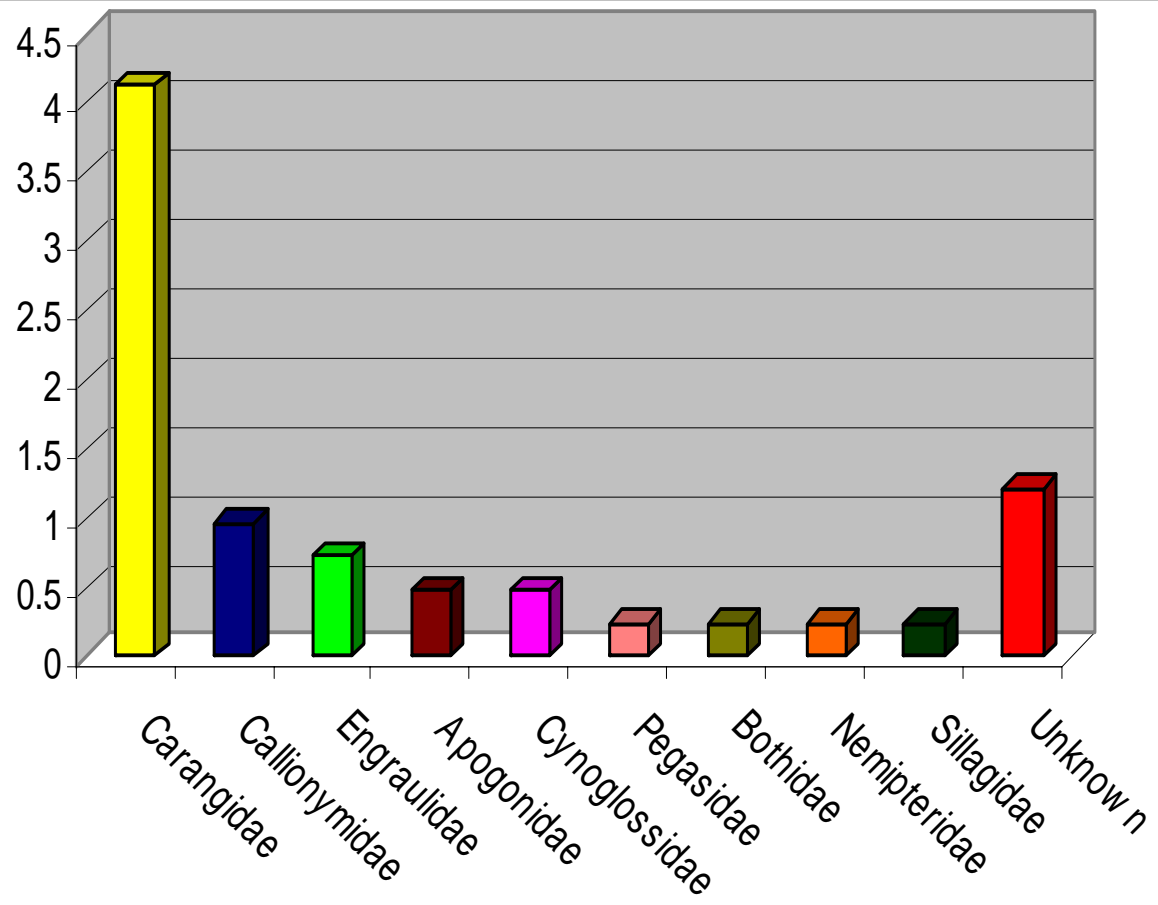
Bothidae



Sillaginidae

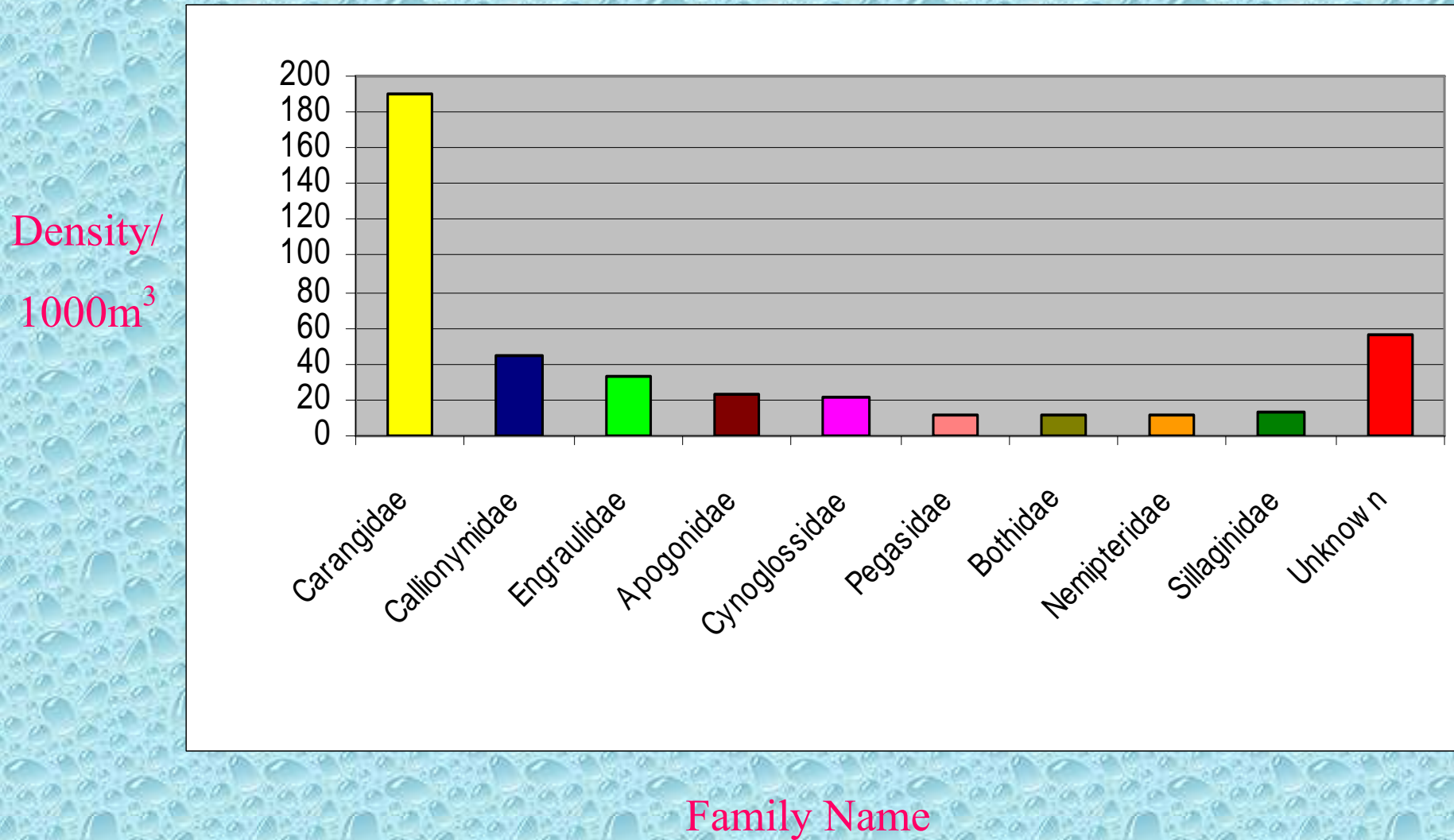
Density of Fish Larvae/m²

Density/
m²



Family Name

Density of Fish Larvae/1000m³



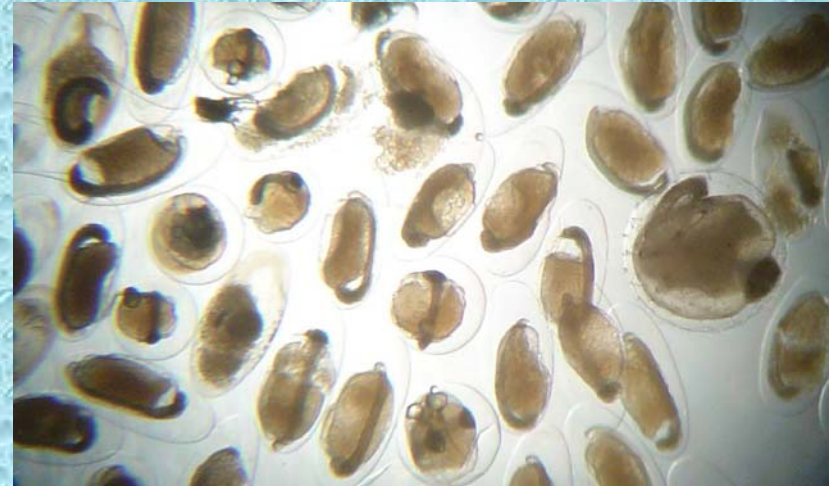
Density of Fish Larvae

Family	Ind.Count	Density/1000m³	Density/m²
Carangidae	17	190.48	4.13
Callionymidae	4	44.82	0.97
Engraulidae	3	33.61	0.73
Apogonidae	2	22.41	0.49
Cynoglossidae	2	22.21	0.49
Pegasidae	1	11.2	0.24
Bothidae	1	11.2	0.24
Nemipteridae	1	12.2	0.24
Sillaginidae	1	13.2	0.24
Unknown	5	56.02	1.21
Total	37	414.57	8.98

Ave. length – 2.89 mm

Fish Eggs

1. Engraulidae Eggs- Ave. length 1.21 mm
(0.49mm dia.)
2. Clupeidae Eggs- Ave. diameter 0.65mm
3. Unknown



Fish Egg Density

10,812.32 eggs/1000 m³ or

108 eggs/10 m³

The background of the image is a dense, repeating pattern of light blue water droplets of various sizes, scattered across a slightly darker blue surface. The droplets are rendered with soft highlights and shadows, giving them a three-dimensional appearance. In the center of this pattern, the words "Thank You!" are written in a black, serif font.

Thank You!