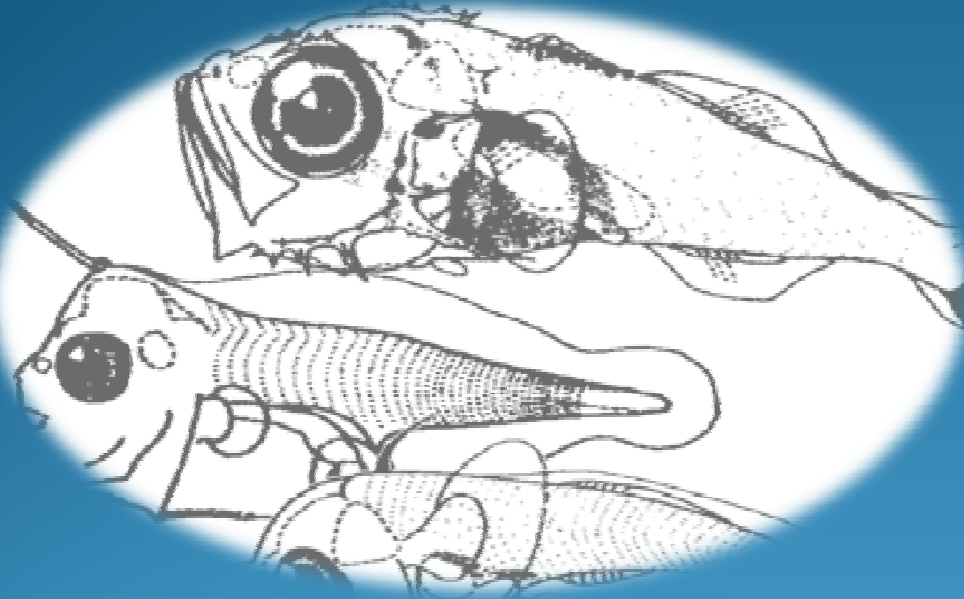


REPORT GROUP B-2

By :

Zulkifli (Malaysia)

Ilham (Indonesia)



**Species Composition From Push Net
And
Density of Fish Larvae and Egg From Bongo Net**



Outline of Presentation


- I. Introduction**
- II. Methodology**
- III. Result**





I. Introduction



- 
- An important component of the regional training workshop involves at-sea training activities associated with the conduct of larval and juvenile fish surveys and the storage of fish samples.
 - Objective at - sea training are :
 - a) to demonstrate juvenile fishes sampling techniques using Push Net, and
 - b) to demonstrate eggs & larval fishes sampling technique using Bongo Net





II. Methodology





Juvenile Fish Survey :

- 1) Record the position and other general information in the worksheet.
- 2) Weight total catch per haul per hour.
- 3) Sorting to group (Fish, Crab, Mantis, Shrimp).
- 4) Weight each group and take 1 kg sample from the fish group
- 5) Preserved the juvenile fishes by formalin 10 %.
- 6) Take back to laboratory for identification.






Fish Larvae Survey :

- 1) Calibrate flow meter
- 2) Record the position and other general information in the worksheet.
- 3) Taking sample using Bongo net

Laboratory procedures :

- 1) Sorting (fish larvae and fish eggs)
 - 2) Identify
 - 3) Count
 - 4) Size measurement
- 



III. Result





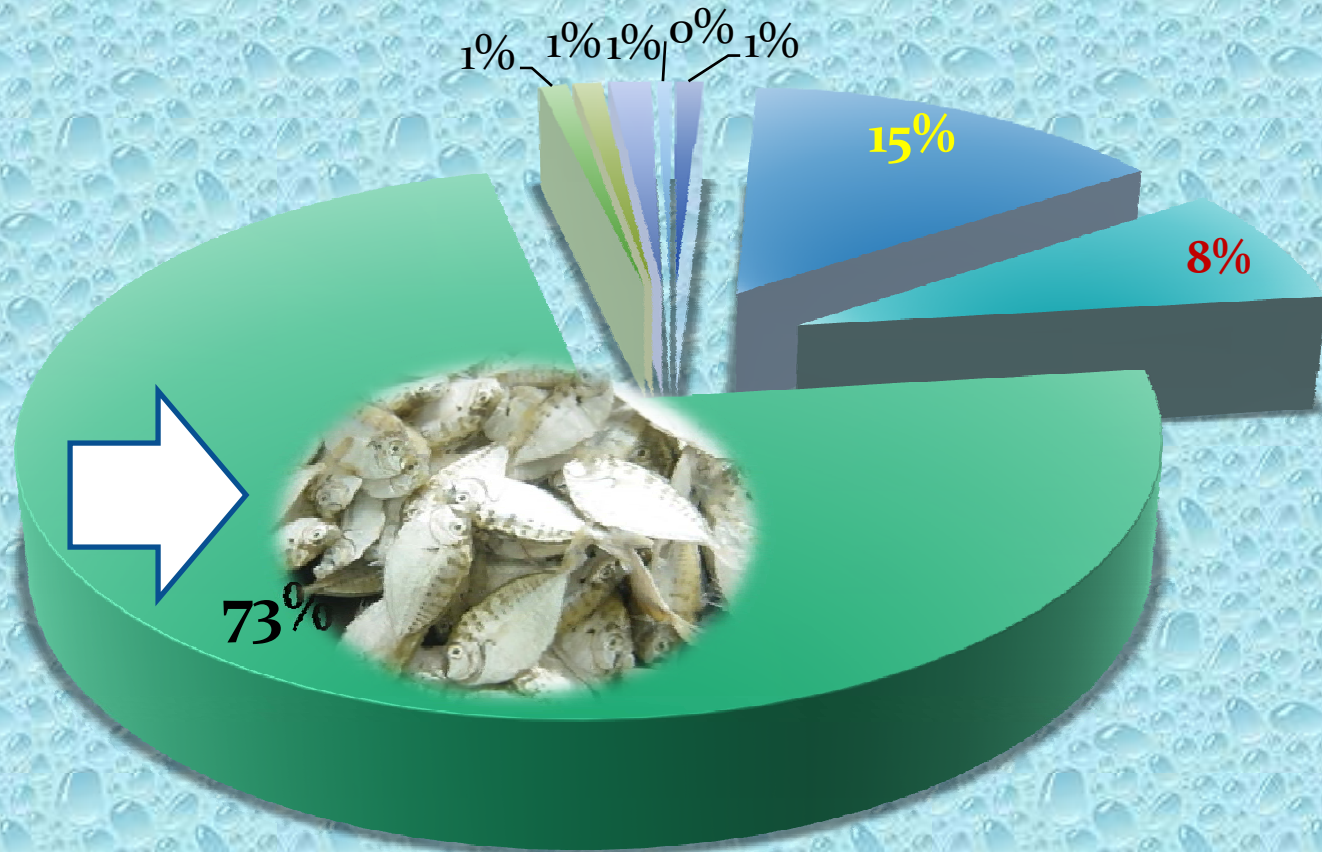
Species Composition From Push Net



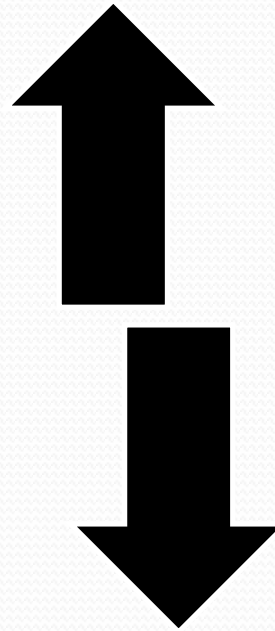
Species Composition



- Engraulidae
- Clupeidae
- Etherinidae
- Leiognathidae
- Teraponidae
- Carangidae
- Sciaenidae
- Mugillidae



No of fish/hour of push net operation



11024 fish
/ hour





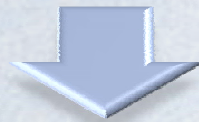
Density of Fish Larvae



Density Total of Fish Larvae

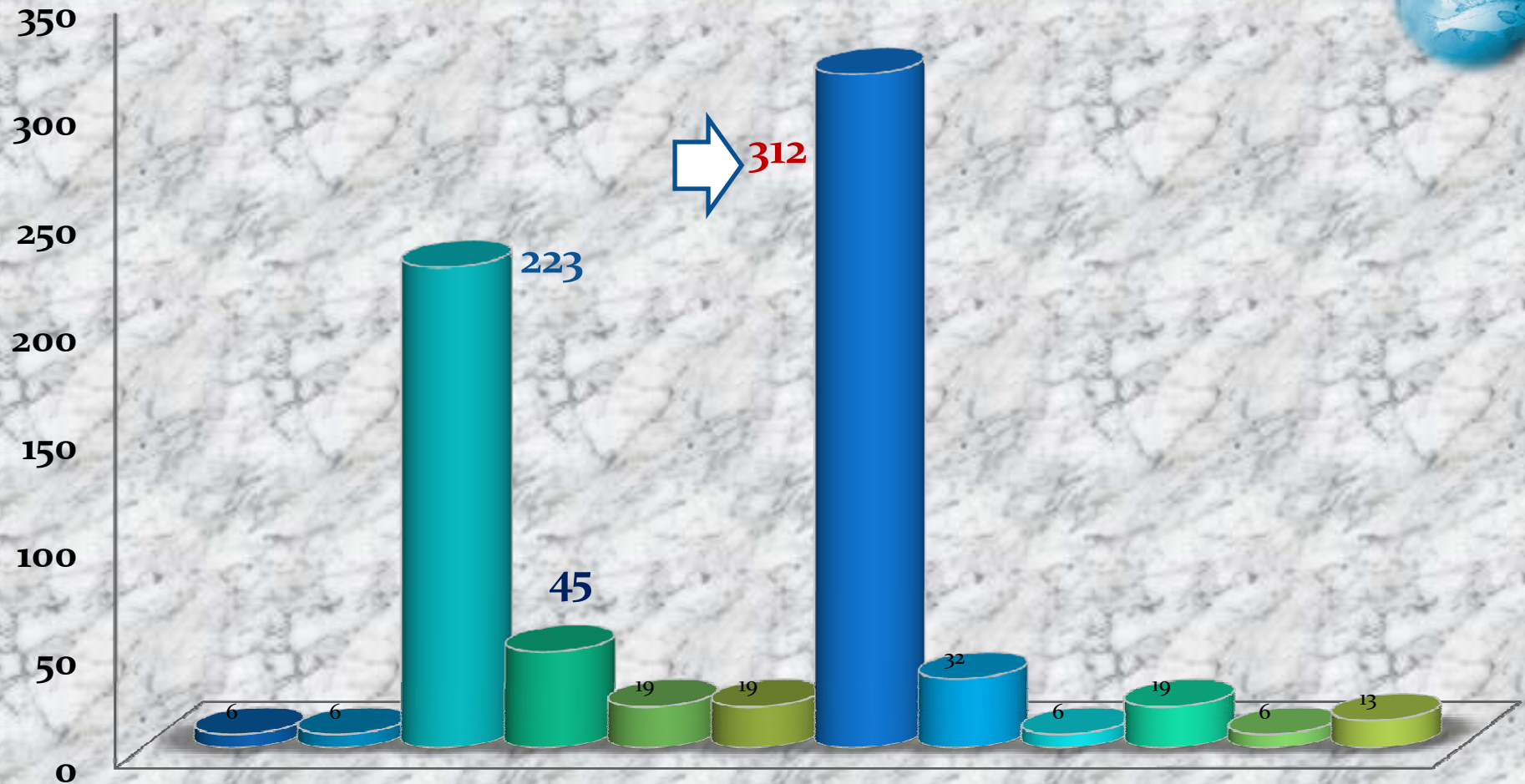
Total
Species
= 111
ind

Volume
water
= 157
m³



Density = 707 ind/1000m³





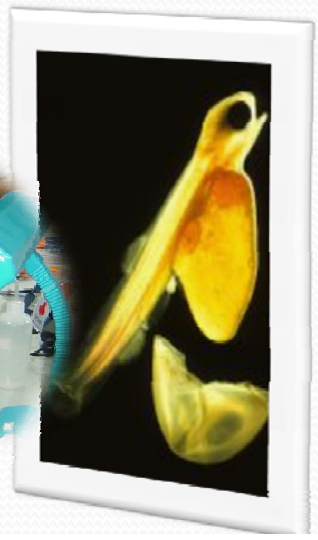
Density (ind/1000m3)

- | | | |
|-----------------|-----------------|----------------|
| ■ Apogonidae | ■ Bothidae | ■ Carangidae |
| ■ Callionymidae | ■ Cynoglossidae | ■ Sillaginidae |
| ■ Engraulidae | ■ Gobiidae | ■ Leignathidae |
| ■ Nemipteridae | ■ Monocanthidae | ■ Damage |

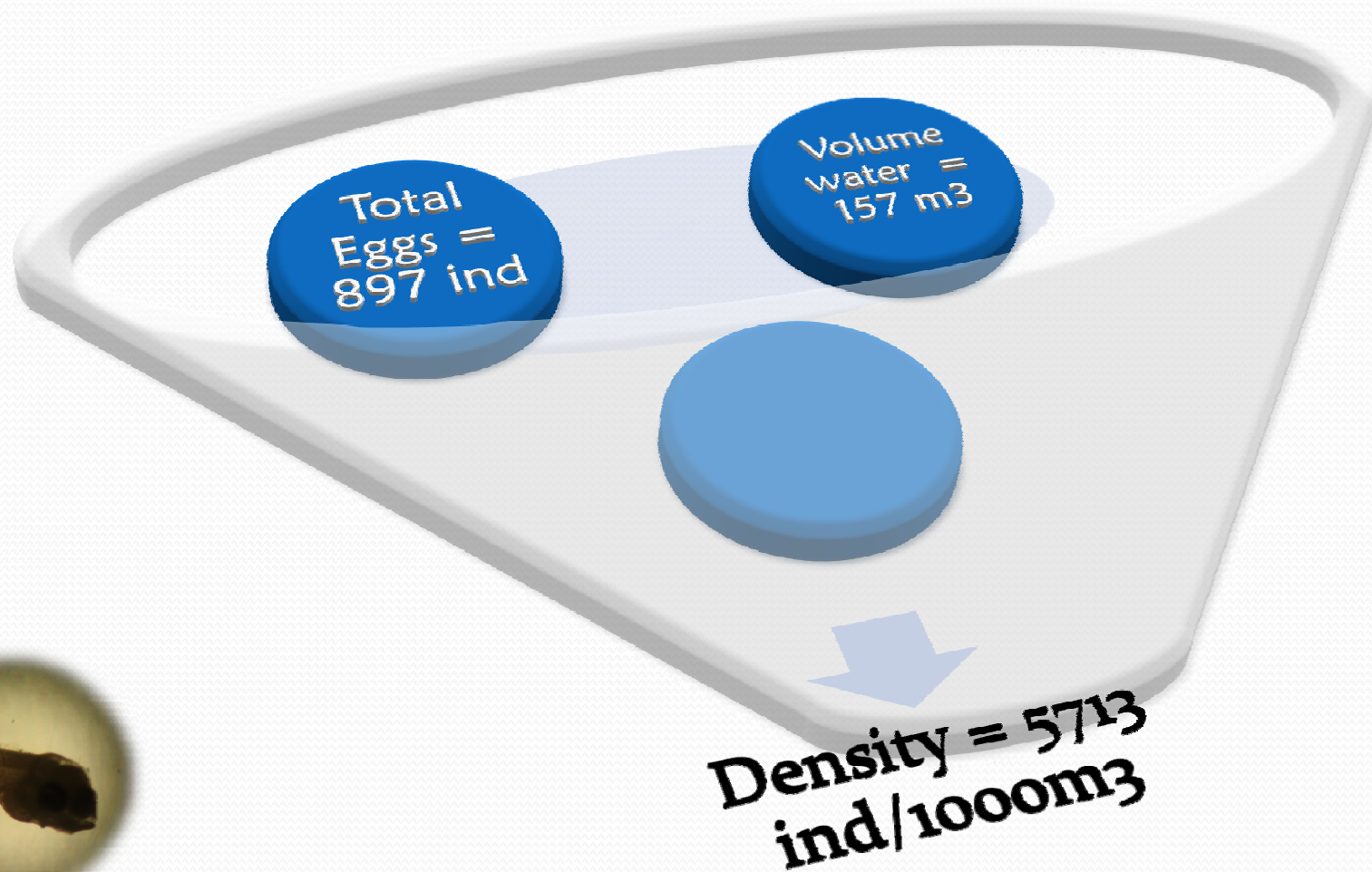




Density of Fish Egg



Density Total of Fish Eggs





Future Plan For Fish Larvae Study in Home Country



- 1. To strengthen fish larva identification.*
- 2. To prepare Fish larvae study to establish fisheries refugia.*
- 3. To determine the spawning season.*
- 4. To collaborate with other countries / organization in fish larvae study.*





Thank YOU

KAPHUN KHAB

