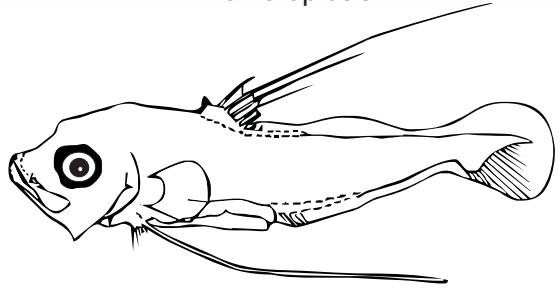


Group 7 (IIC₂)

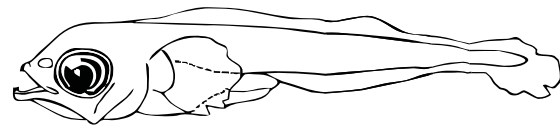
Body elongate (BD = 10-20% BL)
Gut initially uncoiled, coiling during or after flexion



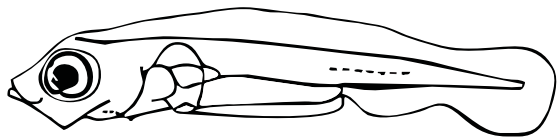
Anomalopidae



Berycidae



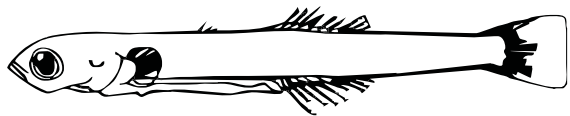
Blenniidae



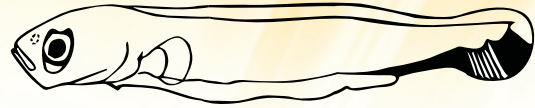
Chaetodontidae



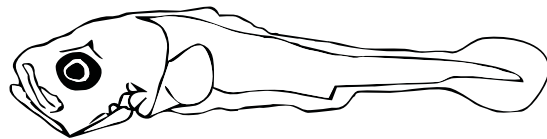
Coryphaenidae



Eleotridae



Labridae



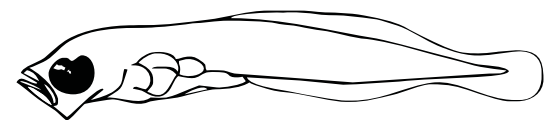
Rachycentridae



Scaridae



Sillaginidae



Tripterygiidae