

YSLME MPA NETWORKING WORKSHOP

14-16 January 2020 • Dalian, Liaoning, PR China

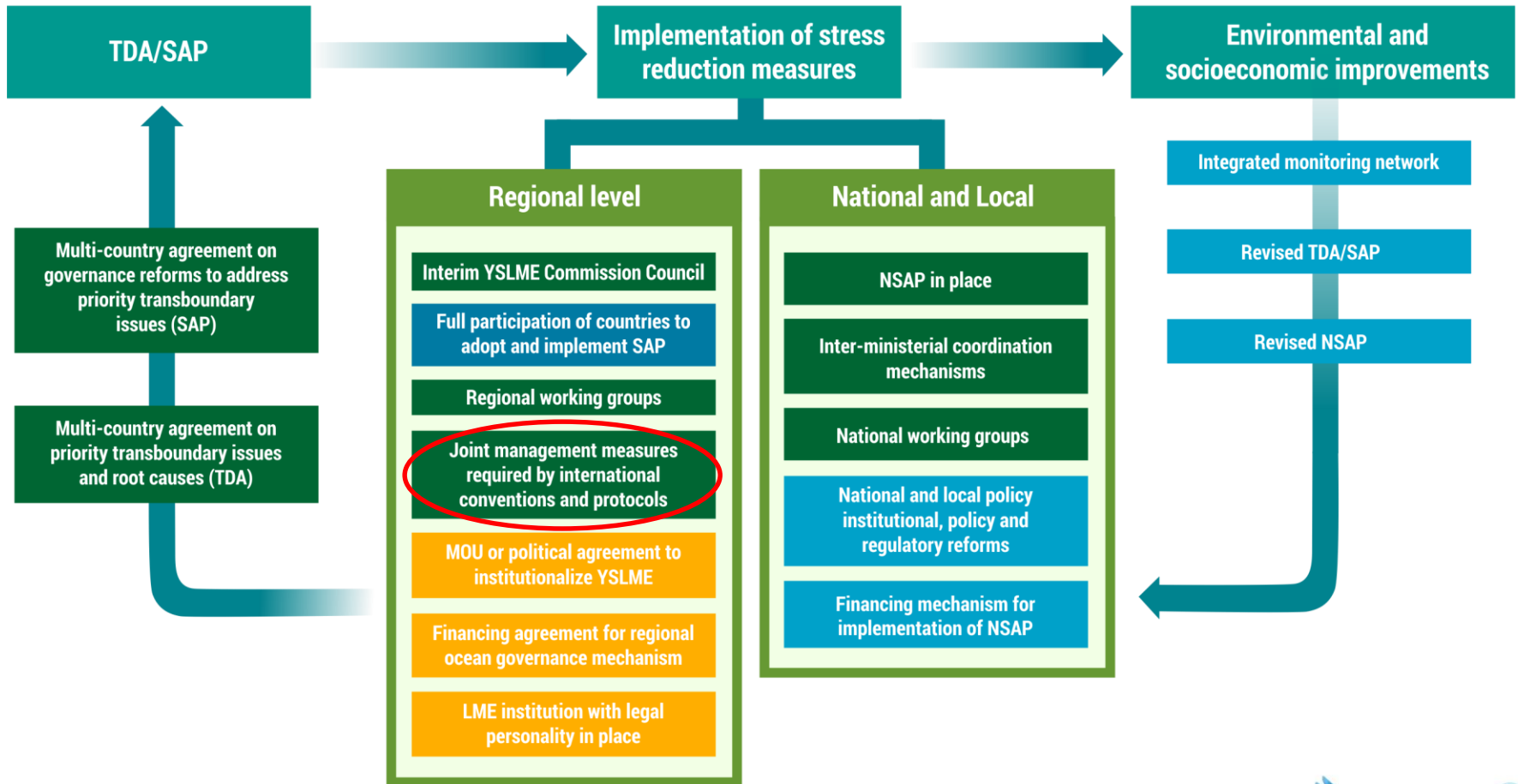
Background, Design and Expected Outcomes

Yinfeng Guo

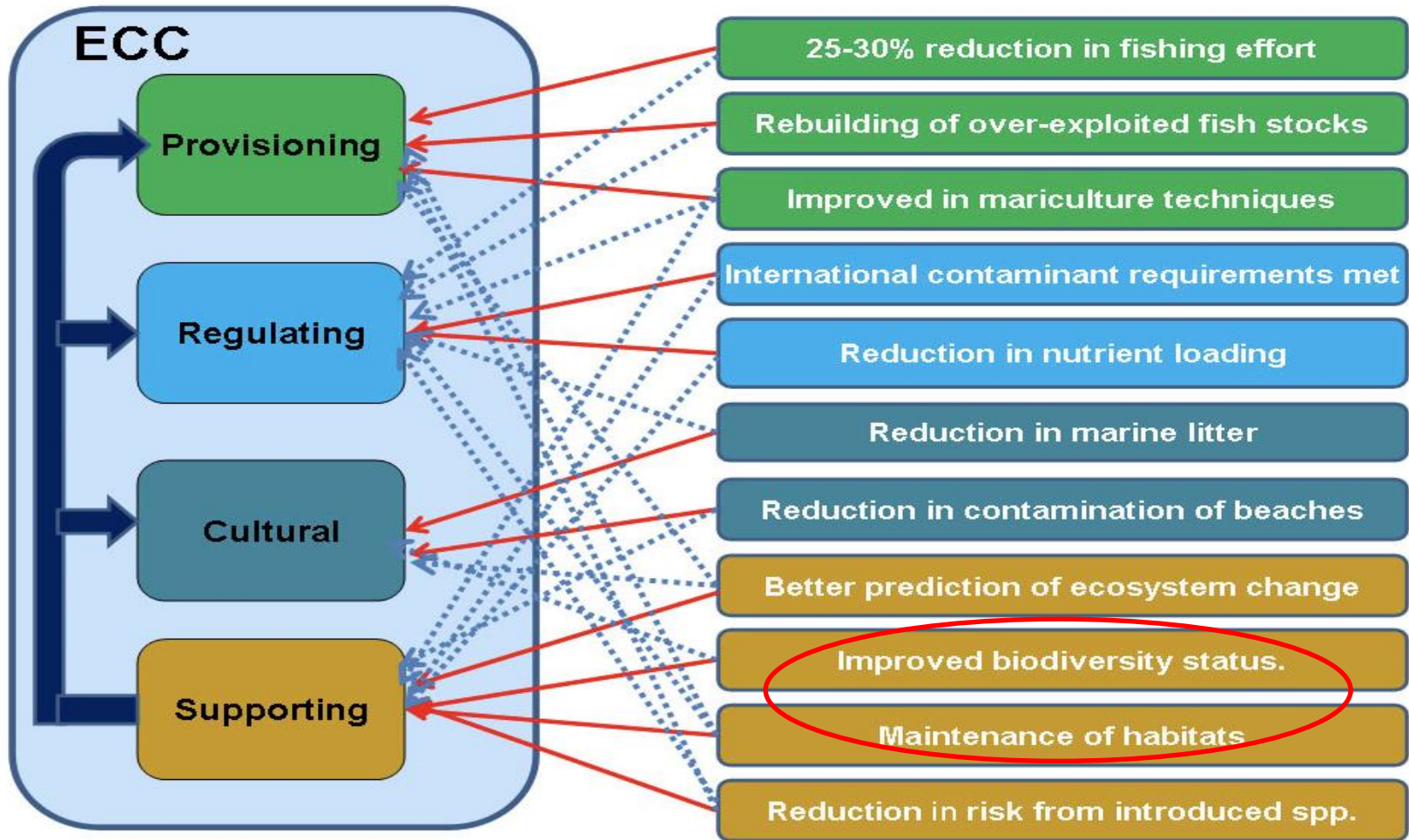
Chief Technical Adviser and Manager
UNDP/GEF YSLME Phase II Project



Strategic Planning and Governance Framework of Large Marine Ecosystems



Restoring Ecosystem Carrying Capacity by achieving 11 YSLME SAP Targets



Indicator 13: Areas of critical habitats and status of mitigation of reclamation impacts

End of project targets:

1. Areas of critical habitats maintained at baseline level
2. increase 3% total areas as MPAs
3. Impacts of reclamation prepared in 2 demo sites

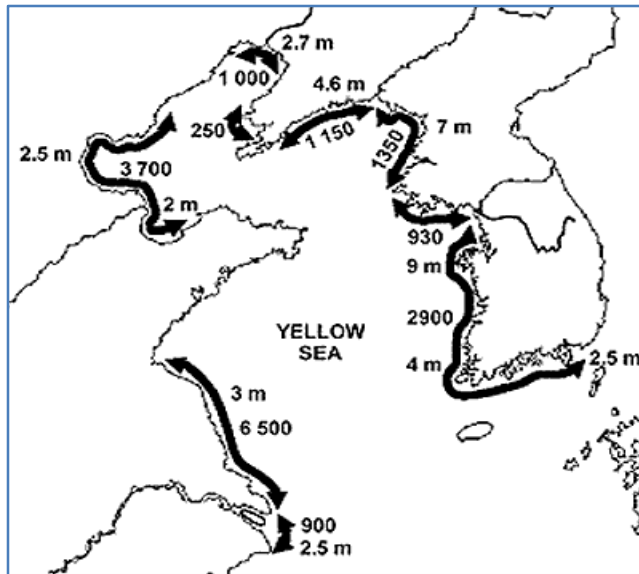
Means of verification: Contents of technical reports, PIR and website - 1) YSLME Biodiversity conservation plan (2020-2030); 2) technical reports on reclamation and designation of MPAs

Status (major ones):

1. YSLME Biodiversity Conservation Plan for both PRC and ROK prepared to serve for consolidating the [YSLME Biodiversity Conservation Plan \(2020-2030\)](#);
2. [Assessment of ecosystem services of Rudong Mudflat](#) and another intertidal mudflat or coastal areas subject to reclamation (FIO)
3. [A zoning plan](#) including coordination mechanism in line with the master plan of local land use and sea use (FIO)
4. [Implementation of CBD and RAMSAR](#) with recommendations for integration of SDG14, CBD and RAMSAR targets into YSLME SAP (FIO)

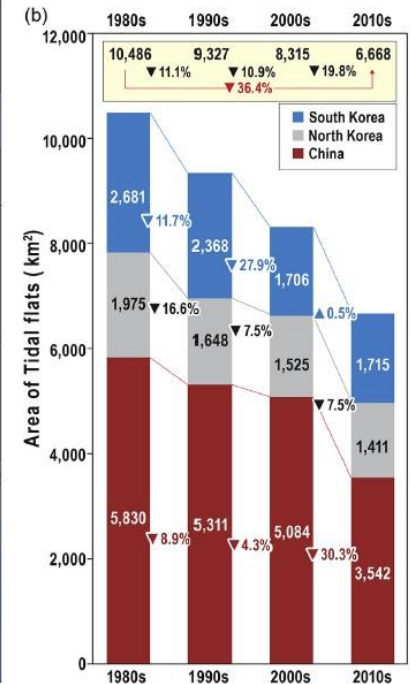
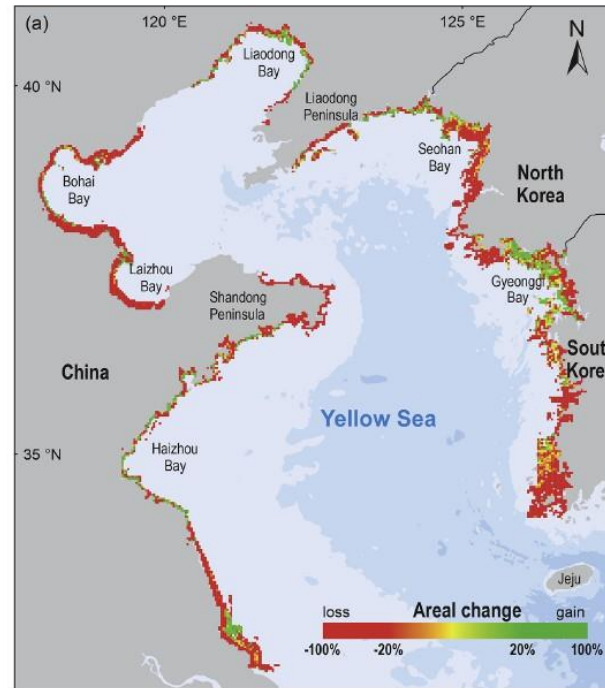


Indicator 13: Areas of critical habitats and status of mitigation of reclamation impacts



Tidal Mudflats on the Periphery of the Yellow Sea

(Source: Jongseo Yim et al, 2018)



(Source: Y. Liu et al, 2019)



Indicator 14: Level of ecological connectivity in expansion of the YS MPA system



End of project targets:

The planned expansion of the MPA system take into account ecological connectivity

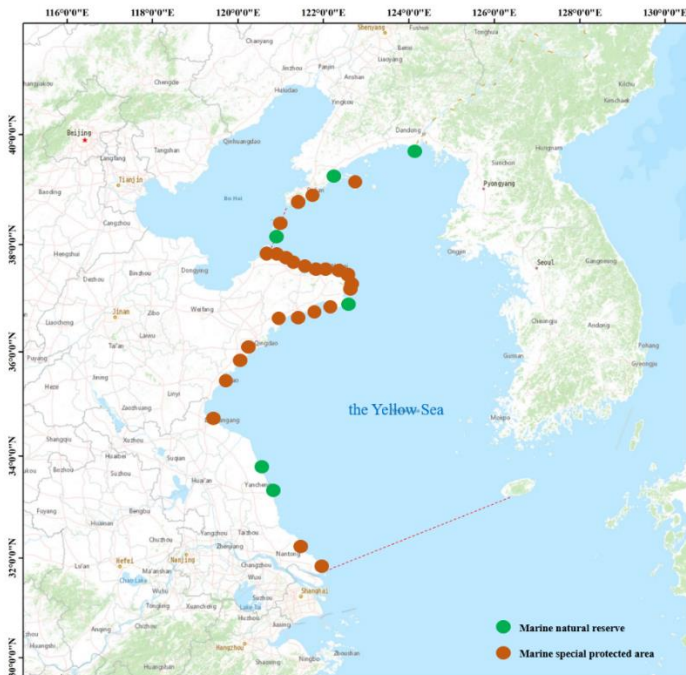
Means of verification: 1) Technical reports, PIR and website; 2) Latest zoning plans and coverage in MPAs of ecologically and biologically important areas identified by partners

Status (major ones):

1. **A MPA network development training toolkit** called “Designing a network of MPAs for the YS based on principles of biophysical connectivity” (completed);
2. **Feasibility study to designate Xiaoyangkou of Rudong** of Jiangsu as a MPA (completed)
3. A series of studies being implemented by **FIO** via PCA:
 - Relevance of existing zoning schemes to connectivity of existing MPAs and potential MPAs
 - **Map of priority areas for designation** as conservation areas in YS and identify opportunities for improvements in connectivity with existing and new MPAs
 - **Spotted seal study:** migratory route, genetic diversity, and management plan
4. A series of studies being implemented by **NMEMC** via PCA:
 - **Designating or enlarging new MPAs** for endangered mammals or for habitats of endangered waterbirds



23 potential priority areas in YS are defined by WWF in 2007. To date, 58 MPAs in PRC and 28 MPAs in ROK are designated to protect marine mammals, birds, fishes, mollusks, plants and algae in YS.



The MPAs of the PRC and ROK only represent 2.1% of YS, far below the 10% Aichi Target!



Indicator 14: Level of ecological connectivity in expansion of the YS MPA system



Gaps, risks and issues:

Provincial and local governments may not agree to the establishment of new MPAs

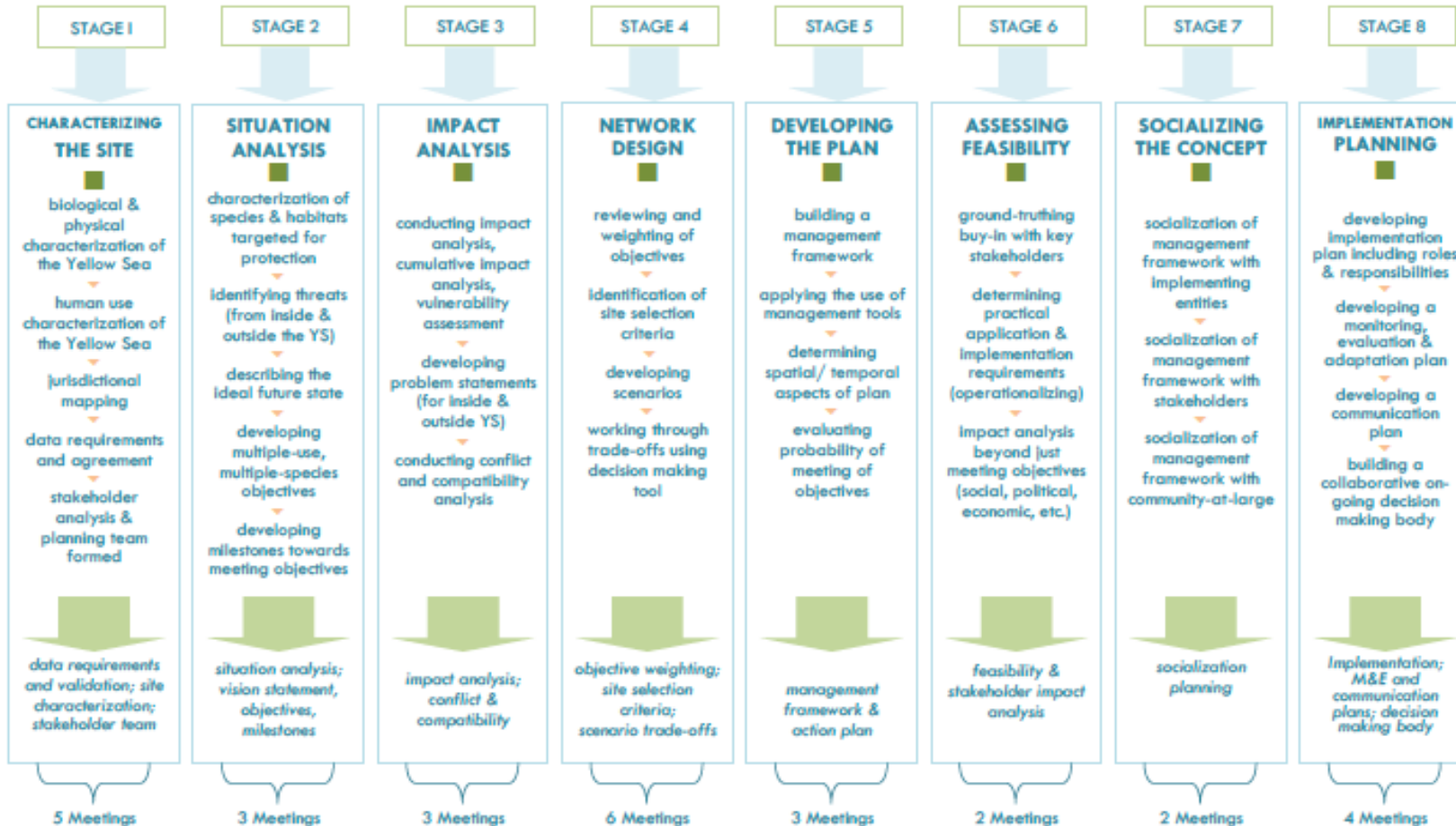
- Strengthened management actions and increase public awareness

Activities planned in Q4 and 2020:

- **Sharing knowledge and relevant information on expansion of MPA:**
 - MPA network meeting on Jan. 2020 with participation of site managers from both countries (focus on the theme of expansion of MPA with connectivity)
- **Outcome of feasibility study: Xiaoyangkou to be designated as a MPA**



Planning process and framework for YSLME MPA Network (P198 of toolkit)



Workshop Objectives



- To familiarize with the theories and principles of MPA networking through biophysical connectivity
- To review the progress of implementation of PCAs with NMEMC, FIO and YSFRI with regards to biodiversity mapping through overlays and status quo of MPA networking in RO Korea
- Building on the results and recommendations and follow-up actions suggested at the MPA training workshop in Seocheon, RO Korea, to discuss and agree on the objectives of the YSLME MPA network focusing on spotted seals, small yellow croaker and spoon-billed sandpipers and processes for each group



Expected Workshop Outcomes



1. Better understanding of the theories and principles of MPA networking through biophysical connectivity
 - ❖ process & framework
 - ❖ Identification of site selection criteria
 - ❖ Ideal future state of transboundary species and associated habitats of global and regional biological and ecological significance
 - ❖ Steps
2. Stocktaking of MPA management, conservation, project-supported activities and gaps in conservation efforts at generic and species levels (Session 2 & 5)
 - ❖ Biological and physical characterization of YS
 - ❖ Jurisdictional mapping of existing MPAs (including DPRK)
 - ❖ Data requirements and gaps
 - ❖ Threats identification
 - ❖ Management tools



Expected Workshop Outcomes



3. YSLME MPA Network with a map of priority areas for designation as conservation areas in YS and opportunities for aligning MPA development with biophysical connectivity through zoning schemes and capacity development of existing MPAs (Session 3 and 4)
 - ❖ Reconfirmed objectives of MPA network for SS and SBS
 - ❖ Roadmaps for the developing the MPA network for SS and SBS
 - ❖ Characterization of species & habitats targeted for protection
 - ❖ Boundaries of SS and SBS taking into consideration biophysical connectivity and climate scenarios
 - ❖ data gaps from human use and threats to SS in ROK
 - ❖ Effectiveness assessment to MPAs for SS and SBS
 - ❖ Scenario analysis of business as usual
4. Workplan for establishing YSLME MPA network (Session 6)
 - ❖ YSLME MPA Network
 - ❖ Collaborative ongoing decision-making body
 - ❖ Communication planning
 - ❖ M&E and adaptation planning
 - ❖ Implementation plan and roles and responsibilities
 - ❖ 2020 events and lead agencies



Questions?

**YSLME MPA NETWORKING
WORKSHOP**

14-16 January 2019 • Dalian, Liaoning, PR China

